

Walnut Creek January Dr. Flood Risk Reduction Project

January 30, 2024

CIP ID: 5789.122

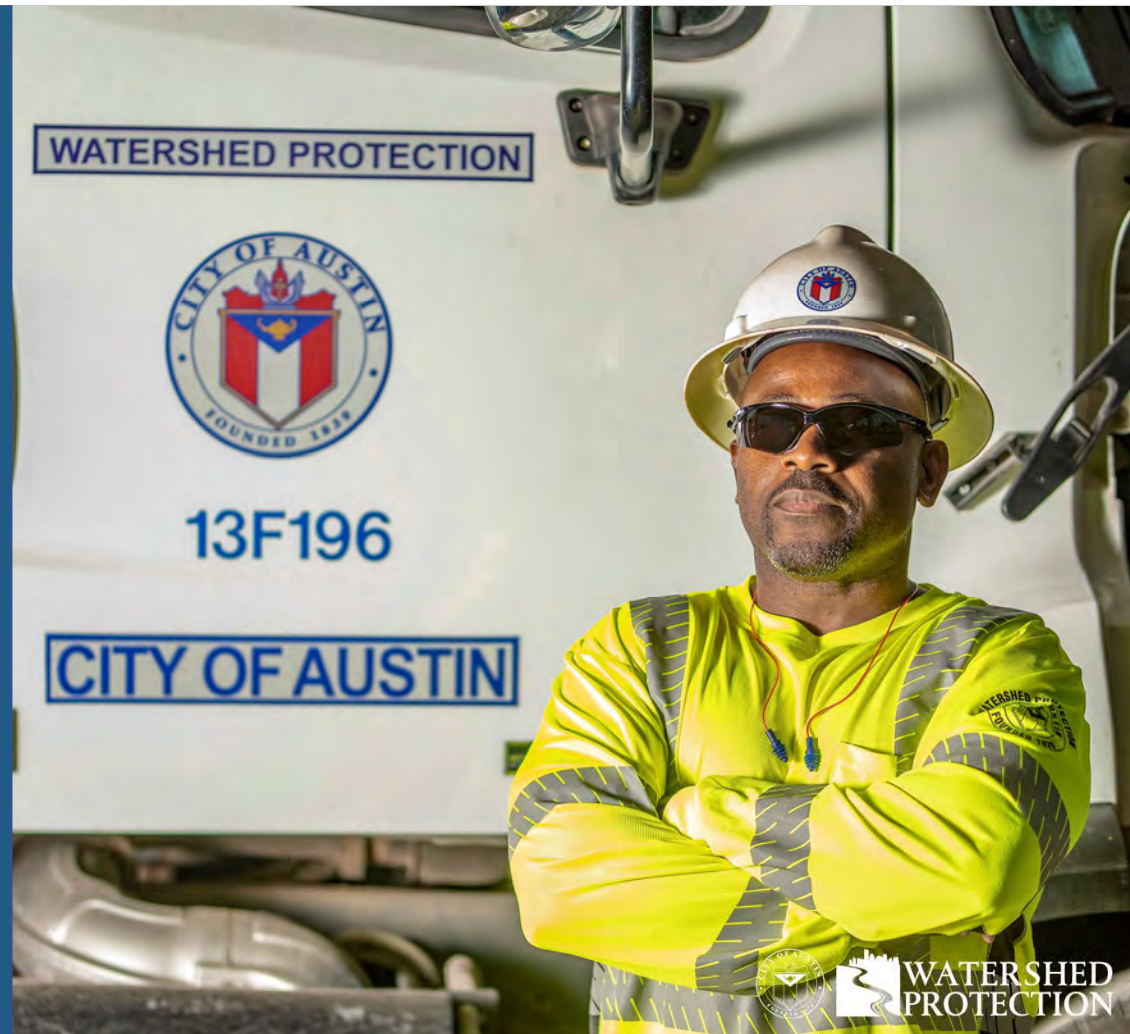
Agenda

- Department and Staff Introductions
- What is a Storm Drain System?
- Project Update
- Questions



Watershed Protection

Protects lives, property and the environment of our community by reducing the impact of flooding, erosion and water pollution.



Staff Introductions

Isaac Chavez, P.E., Project Sponsor

Watershed Protection Department

P: (512) 974-2349

Isaac.Chavez@austintexas.gov

Claudia Corsetti, P.E., CFM, PMP, Project Manager

Project Management Division

P: (512) 974-7205

Claudia.Corsetti@austintexas.gov

Stephanie Lott, Outreach Coordinator

Watershed Protection Department

P: (512) 974-2799

Stephanie.Lott@austintexas.gov



Localized Flooding

Occurs away from creeks.



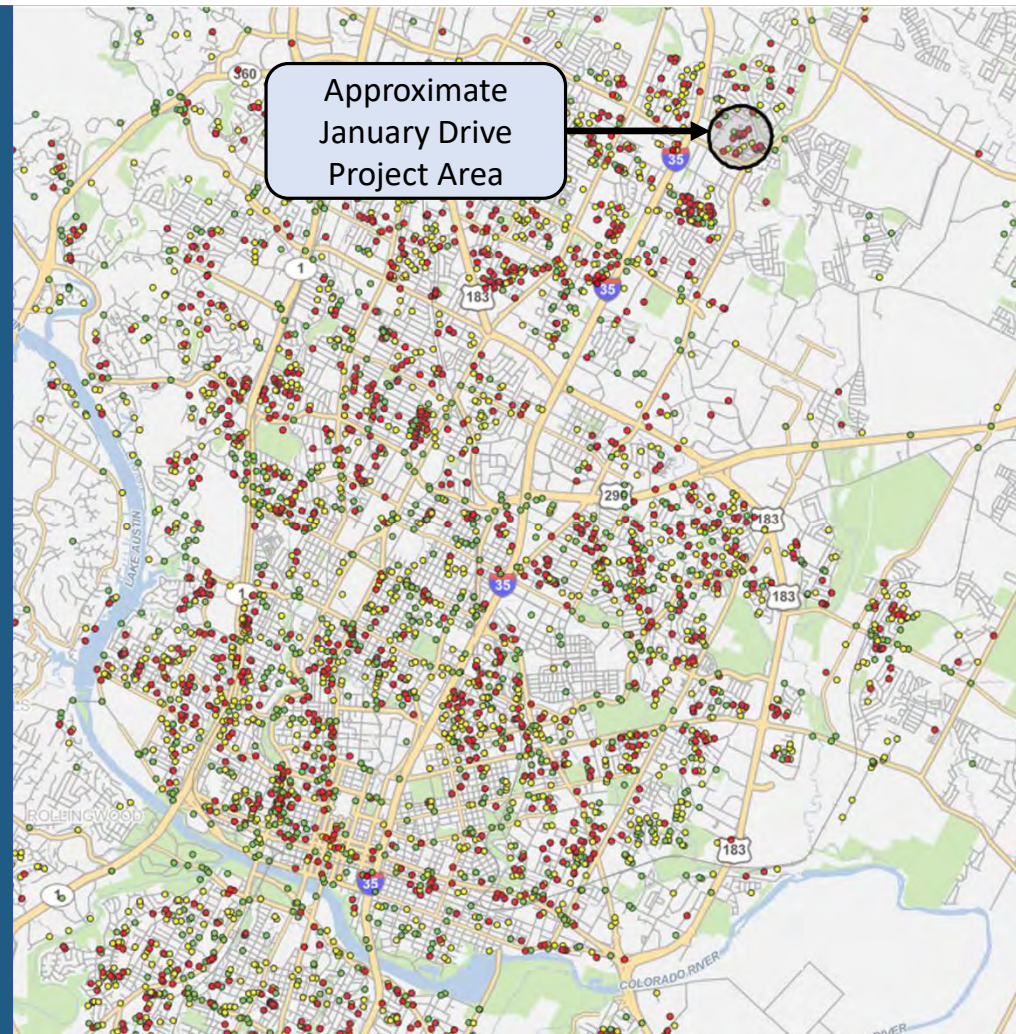
Creek Flooding

Occurs when a creek rises over its banks.



Localized Flooding Citywide

- 6,562 Total Flooding Reports
 - 2,289 Buildings
 - 2,608 Yards
 - 1,665 Streets
- Neighborhoods built before the 1980s often have more flooding problems
- No quick or easy solution





What is a Storm Drain System?

- Prevents flooding by directing storm water to a safe and controlled destination
- Transports rainfall from land, streets, and buildings to nearby creeks or ponds
- Inlets are placed along curb in the gutter to capture storm water

Components of a Storm Drain System

1. Inlets and curbs capture rainwater.



2. Underground pipes and drainage ditches transport the water.



3. Rainwater is released into a pond or creek at an outfall point.



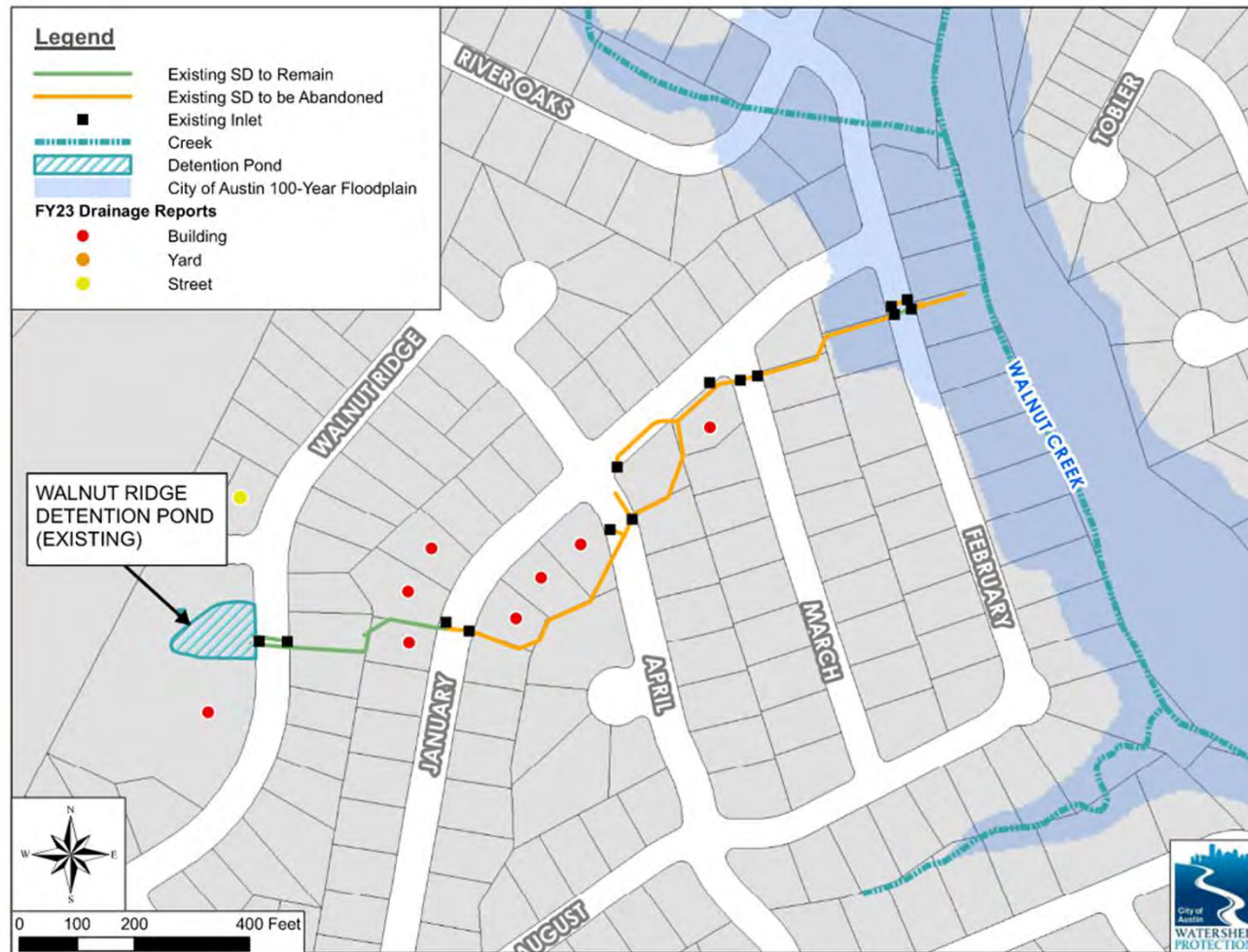
Stormwater Detention and Water Quality Ponds

- Storm drain system transports water into a detention pond before eventually sending water to creek
- Water is held temporarily in the pond and released at a controlled rate, preventing adverse impacts downstream
- Water Quality ponds are sometimes used to remove pollutants before they reach a creek
- Maintenance on the upstream existing detention pond located on Walnut Ridge Drive has recently been completed



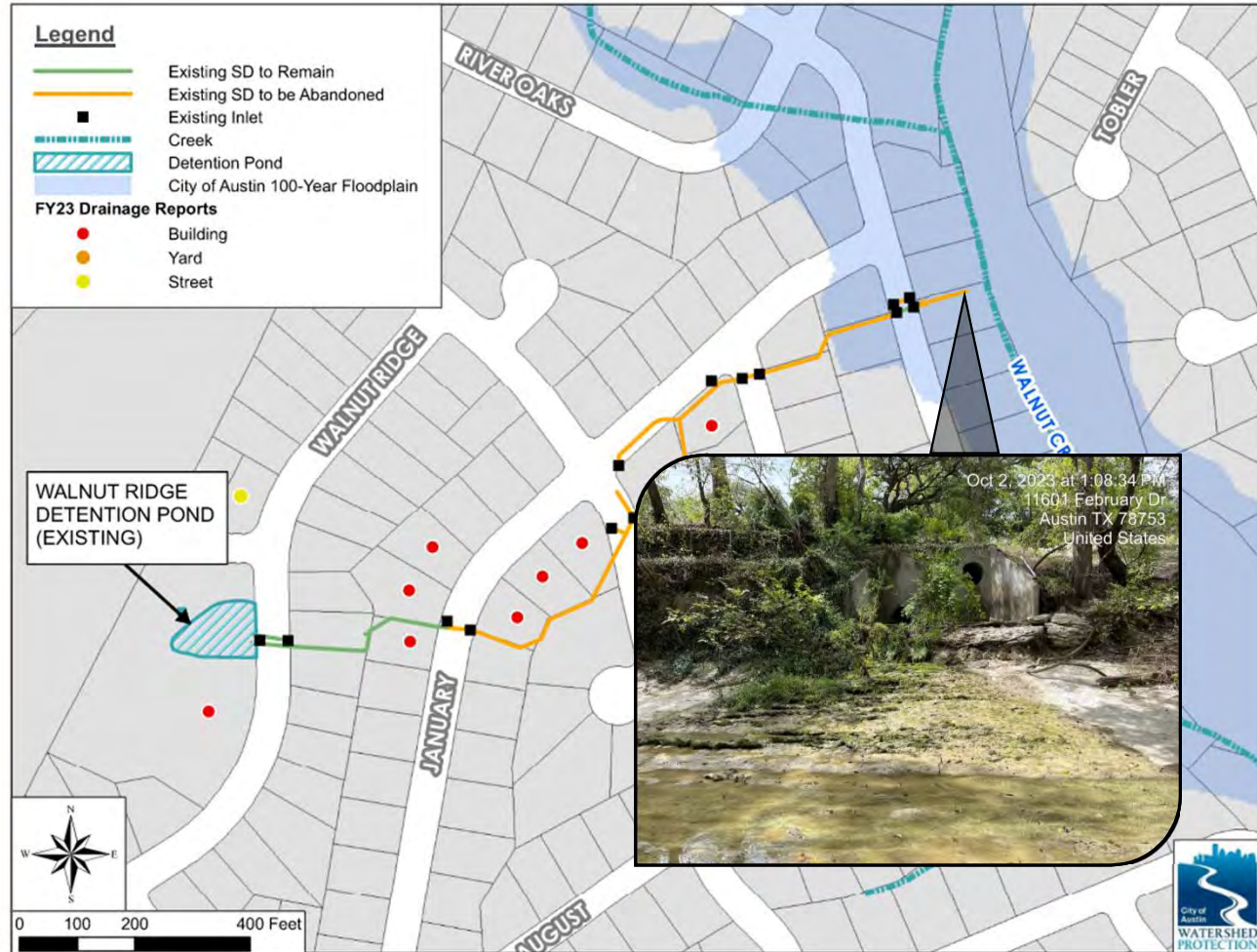
Project Introduction

- High priority area for local flooding
- Local flooding reports – 7
- Existing storm drain system was a series of inlets and pipes built in the 1970s



Problem Statement

- Main cause of flooding is undersized storm drain infrastructure
- Location of existing system causes challenges for WPD maintenance crews
- Critical Environmental Features at the outfall such as a spring and rimrock make building in this area challenging



Extent of Current Flooding



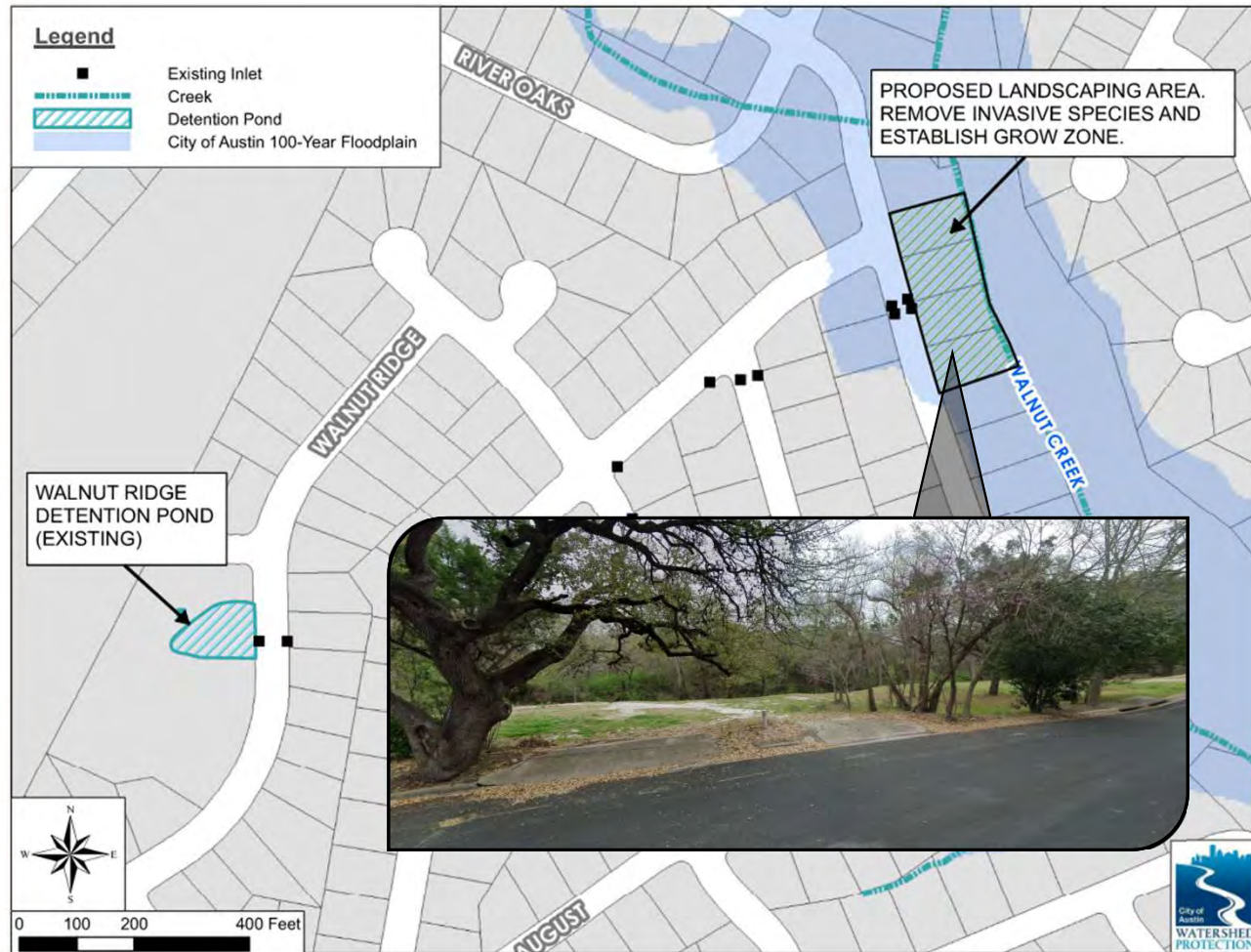
Project Objectives

- Bring new infrastructure up to current CoA standards where possible
- Design system to be easily accessible for maintenance by WPD staff
- Preserve existing inlets where possible



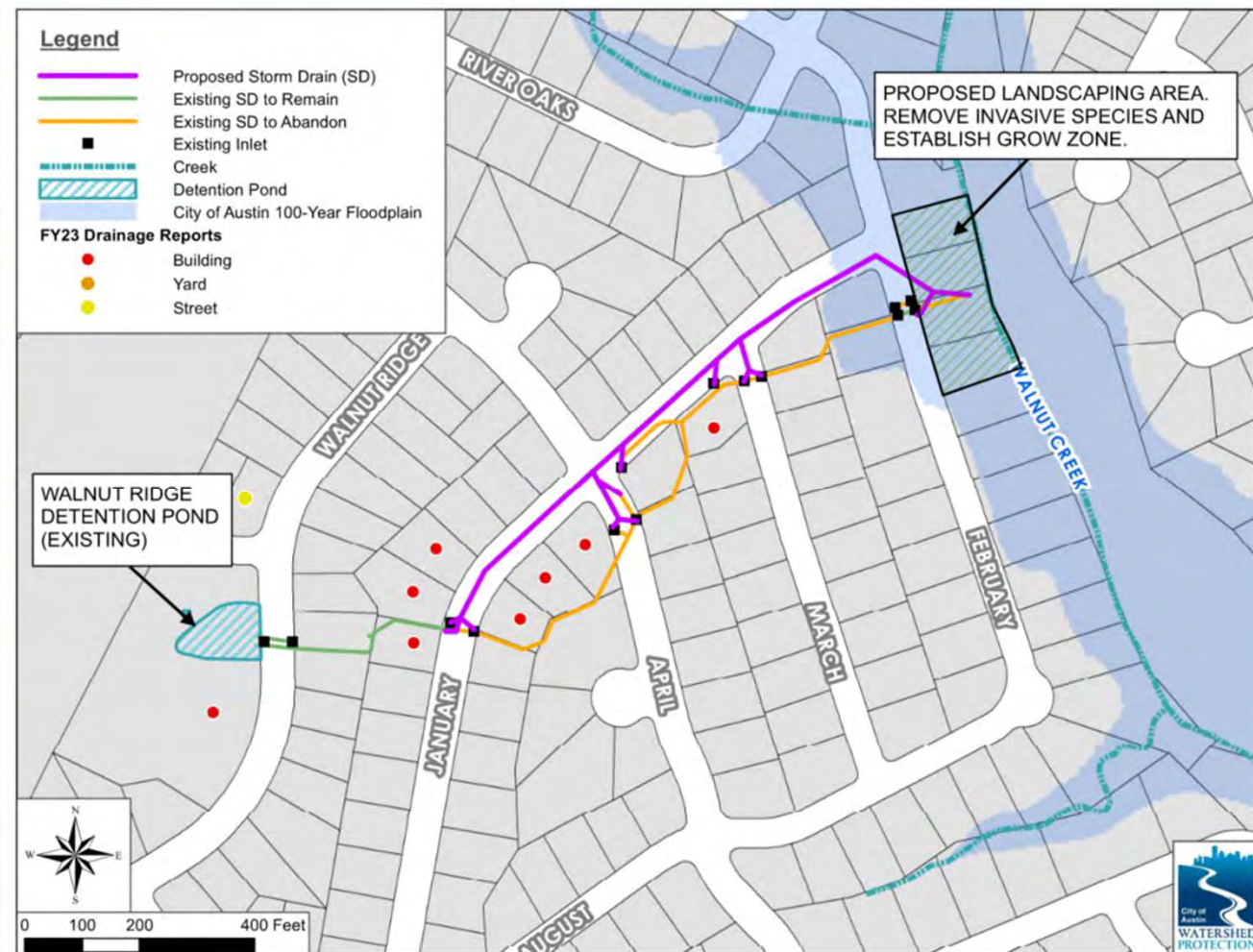
Project Objectives

- Restore downstream “buyout” lots and prepare to transfer land ownership to the CoA Parks and Recreation Department
- Minimize disturbance to existing outfall area and Critical Environmental Features



Project Solutions

- Reroute and upsize the existing storm drain system
- System will be constructed mostly within the public right-of-way
- Remove invasive plant species and establish a “Grow Zone” at the creek outfall location



Storm Drain Capital Improvement Project Phases

In House
Feasibility

Preliminary
Engineering

Design &
Permitting

Bidding

Construction

We Are
Here

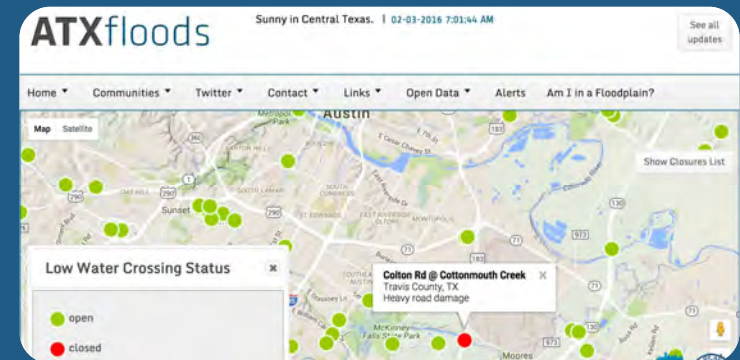
Next Steps: Permitting & Bidding

- Get approval for Environmental Variance for work in project area
- Obtain Site Plan permit from City of Austin Development Services Department
- Hire contractor through bidding process
- Schedule pre-construction meeting and construction start



Available Resources

- Report flooding and drainage concerns to 3-1-1
- Avoid improvements that impact your neighbors
- Consider purchasing flood insurance
- Email floodpro@austintexas.gov for information about flood-proofing
- Check ATXfloods.com for road closures
- Sign up for WarnCentralTexas.org



Ground Rules

Everyone is encouraged to participate!

1. Step up, Step back

Please be brief and to the point. Let others have an opportunity to speak.

2. Mute, Unmute

When called upon, unmute your microphone. One person speaks at a time. When you finish speaking, please be sure to put yourself back on mute.

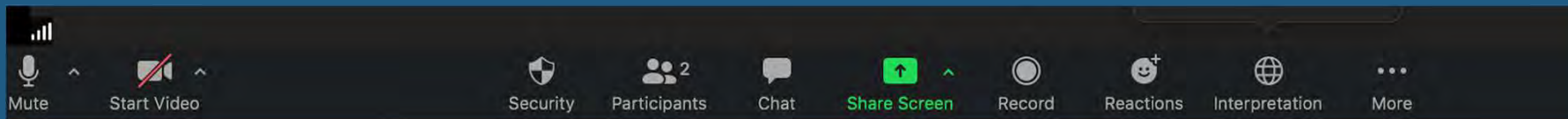
3. Be Mindful

Please be respectful of staff and other attendees. Demeaning, derogatory, disruptive, inflammatory, threatening or vulgar language or actions will not be permitted and may result in attendee(s) being removed from the meeting.

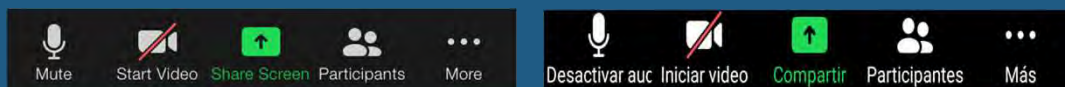
Question and Answer

How to Ask Questions

1. Click on Chat to type your question.
2. Click on Reactions to raise your hand.



3. On a phone, click on “More” to access the chat or raise your hand.



Questions?

Isaac Chavez, P.E.

Project Sponsor

Watershed Protection Department

P: (512) 974-2349

Isaac.Chavez@austintexas.gov

Claudia Corsetti, P.E., CFM, PMP,

Project Manager

Project Management Division

P: (512) 974-7205

Claudia.Corsetti@austintexas.gov

Stephanie Lott

Outreach Coordinator

Watershed Protection Department

P: (512) 974-2799

Stephanie.Lott@austintexas.gov