

The documents outlined below are what the inspector submits to Infrastructure Records (IR) after final Austin Water (AW) inspections. These documents should reflect as-built conditions and are used to complete the AW mapping and IR project close out process. U.C.M 2.6.3

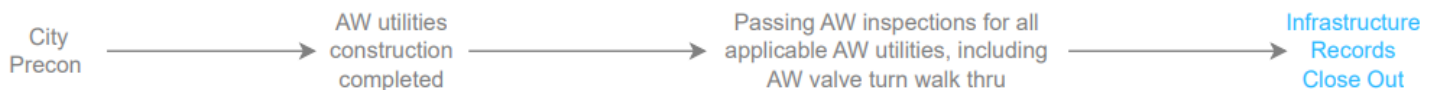
GENERAL FINAL CLOSE OUT CHECKLIST

Development Services Department Site and Subdivision



- ✓ **Passing Austin Water inspections**
- ✓ **Final Cost and Quantities, or Construction Summary**
- ✓ **As-builts**
- ✓ **Intersection Drawings (Water and Reclaimed only)**
 - Intersection Requirements, *pg. 2*
 - Intersection Example, *pg. 3*
 - Valve and Fire Hydrant Manufacturer Abbreviations List, *pg. 4*
 - Intersection Precursory Review Process, *pg. 5*

Capital Improvement Projects



- ✓ **Passing Austin Water inspections**
- ✓ **Final Cost and Quantities, or Pay Application**
- ✓ **As-builts**
- ✓ **Intersection Drawings (Water and Reclaimed only)**
 - Intersection Requirements, *pg. 2*
 - Intersection Example, *pg. 3*
 - Valve and Fire Hydrant Manufacturer Abbreviations List, *pg. 4*

Austin Water Intersection Drawings serve to provide field staff with quick reference information for locating, operating, and maintaining potable and reclaimed water network infrastructure. This document provides guidance to the engineering and development community in the preparation of electronic Intersection Drawings per the COA Utilities Criteria Manual Section 2.6.3.

Intersection Drawings shall include the following: *supplemental document intersection example next page*

1. DWG file(s) of intersections in AW template. Intersection template may be downloaded here:

https://drive.google.com/drive/folders/1t2TEuBVw9RgwWqUmCmbO0mmXGzRcl_x?usp=drive_link

A) DWG shall show the following:

Background layer

- a. Property boundary
- b. Curbs/Edge of pavement
- b. ROW delineation
- d. Easement delineation (recorded document number, if available)

Point of Reference layer **for tie down & dimensioning, see Annotation – Dimensioning requirements below*

- a. Fire hydrant
- c. Visible landmarks, e.g. storm drain
- b. Sewer manhole
- *at least 1 required per intersection, where available

Feature asset layer **only applicable to City maintained assets, i.e. within ROW or utility easement*

- a. Mains
- e. Valves [operating, control, zone valves]
- b. Vaults
- f. Manholes [drain, inspection]
- c. Fire Hydrants
- g. Fittings [tees, bends, caps, reducers]
- d. Encasements & Joint Restraints
- h. Water Meter (only if in ROW or utility easement)

Annotation layer:

Dimensioning **distances shall be denoted with units of decimal feet rounded to the nearest tenth (e.g 5.8')*

- a. Dimensions from feature asset to feature asset; &
- b. Dimensions from a feature asset to a point of reference feature, as listed above; &
- c. Dimension water lines to ROW and back of curb or edge of pavement

Labeling & Callouts

- a. Mains [size, material, project #]
- e. Street Names
- h. one corresponding property address
- b. Tees [diameter X diameter]
- f. Encasement
- c. Fire Hydrant WWWID #
- g. Degree and type (Vertical, Horizontal) of bend
- d. Valves unique relative ID starting with 'A' corresponding with Asset Block (WWID)

Blocks & Titles

- a. Project Block [project #, plan sheet page # relative to the intersection, history (type & diameter)]
- b. Asset Block [Valves: unique letter, valve WWWID # with size, type, half-turns], [Fire Hydrant: WWWID #, PSI], **[Both to include manufacturer, year manufactured]**
- c. Plot Stamp: "THIS WATER INTERSECTION PLAN HAS BEEN PRODUCED BY THE CITY OF AUSTIN FOR INTERNAL USE ONLY ON [DATE]. NO WARRANTY IS MADE BY THE CITY OF AUSTIN AS TO ITS ACCURACY OR COMPLETENESS"

B) Scale: 1" = 30';

C) Coordinate System shall be in NAD 1983 State Plane Texas Central FIPS 4203 Feet

D) Maximum distance of intersection 285'w X 215'h; and

2. PDF in standard letter size per intersection

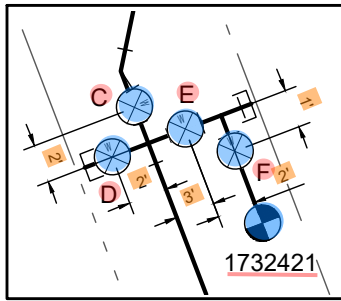
All information on the intersection drawings including but not limited to infrastructure shall be depicted accurately and be consistent with the as-built record drawings certified by an Engineer licensed in the State of Texas. Intersection drawings should reflect as-built field conditions.

Drawing(s) may be returned to the Submitter if it does not comply with the above requirements. Any questions or concerns should be directed to AW Infrastructure Records by email at AWRECORDS@austintexas.gov.

INTERSECTION FINAL PRODUCT EXAMPLE. COLORS CORRESPOND TO AW INTERSECTION REQUIREMENT DOCUMENT.

INT: 27897
 QUAD: G-40-3
 SEC PLAT: NONE

NOTE:
 FH. 1732421 IS 473' EAST OF
 CL RUTLEDGE SPUR.

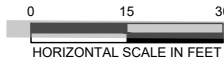


DETAIL 1" = 20'

*2050 N. FM 620 RD, 78729

NOTES WHEN USING TEMPLATE:
 - SYMBOLS ARE EXAGGERATED AND NOT TO SCALE. SHIFT SYMBOLS IF NECESSARY TO PREVENT OVERLAP
 - NORTH ORIENTATION OR APPROXIMATE IS PREFERRED
 - SHOULD REFLECT AS BUILT FIELD CONDITIONS
 - SCALE: 1:30
 **CAD samples are available, email AWRecords@austintexas.gov

PROJ. NO.	SHEET ID	HISTORY
W-94-0539	4	24" DI
W-2003-0049	A-57	24", 12", 6" DI
W-2006-0635	9	16" DI



VALVES: *see Valve and FH Abbreviations List supplemental document

- A (437870) = 24"-REMOVED
- B (520741) = 16"-G-101-2006C-2006
- C (1732407) = 24"-G-____-2003AFC-2004
- D (1732412) = 12"-G-____-2003AFC-2004
- E (1732414) = 12"-G-____-2003AFC-2004
- F (1732423) = 6"-G-____-2003AFC-2004

F.H.:

- 1732421 = ____-2003EJ-2004

VALVE TYPE ABBREVIATIONS

AARV	Automatic Air Release Valve	B	Butterfly
MARV	Manual Air Release Valve	C	Check
CARV	Combination Air Vacuum Release	G	Gate
PRV	Pressure Reducing Valve		
RW	Wedge, Resilient		

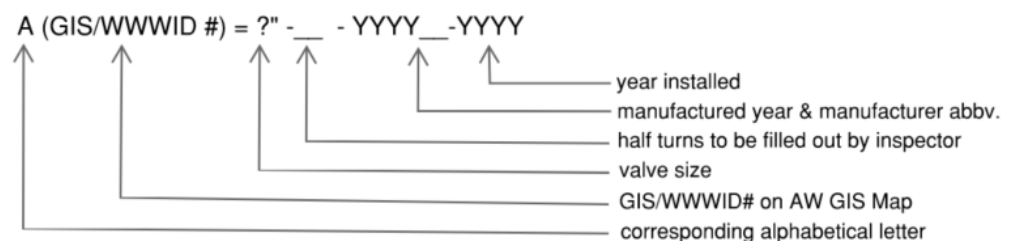
VALVE/FIRE HYDRANT MANUFACTURER ABBREVIATIONS:

A	American Valle & Hydrant (Formerly American Darling)
AFC	American Flow Control
AVC	American AVC Company
AVK	American AVK Company
B	B.I.F. Industries
C	Clow Corporation
COL	Columbia
D	Dresser Industries
DEZ	Dezuric
EJ	East Jordan Iron Works
H	Henry Pratt Company
I	Allis - Chalmers Incorporated
INS	Inserta
K	Kennedy Valve Division
KS	Key Stone
M	Mueller Company
M&H	M&H Valve Company
MS	Metro Seal
R	Renslater
S	Stockham
U	United States Pipe and Foundry Company
US	US Metropolitan
V	Valve and Primer corporation
W	Waterous

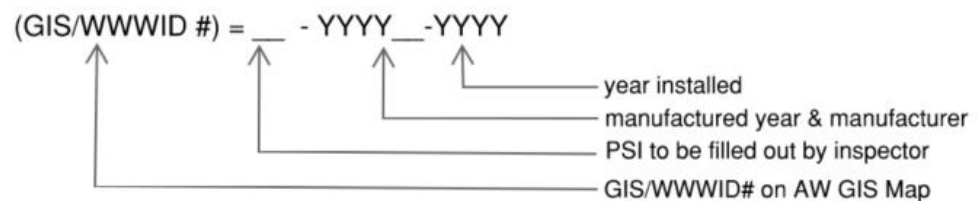
EXAMPLE:

24" and larger valves require serial #

VALVES

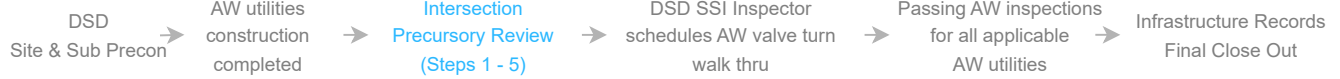


FH



WWWID #s can be obtained from [Austin Water Records Access Application \(GIS map\)](#)

For valve alphabetic identifiers, use next letter in alphabet if valves already exist on an intersection. Do not use letter "I" and "O", these letters look like numerals 1 and 0.



1 Intersection Submittal

Email PDF intersection(s) to AWRecords@austintexas.gov with AW 8 digit project number (20##-####) in the subject line

Tip 1: Plan ahead to submit intersections after completion of water utility construction but before backfill to account for review cycle(s) and engineer response time.

2 IR Reviewer Assignment

Assignment can be found in AB+C Portal under IR Folder within SSI Folder

Project assignment will be delayed if intersections do not meet a majority of the minimum requirements.

3 Intersection Review

✓ **AW Intersection Requirements & Standards**

✓ **Intersection discrepancies against latest permitted plan set**

Tip 2: Use [AW Intersection CAD template](#). Conforming to AW intersection standards will decrease number of redlines and revisions

Tip 3: Intersections should reflect as built conditions that may not have been captured in construction plans. Work directly with your contractor to verify as built conditions and make note of any field changes on the intersections or provide redlined plans to decrease number of review cycles and to prevent AW reinspection.

4 Applicant Communication / Review Cycles

IR Reviewer emails redlines to applicant

Applicant responds via email with updated PDF intersection(s) and CAD file(s)

5 IR Intersection Review Status

a. **Rejected** - major redline items unaddressed

b. **Incomplete/Informal** - major redlines addressed; minor updates and adjustments to CAD files to be completed by IR Reviewer. **See Tip 2: less CAD revisions, quicker turnaround*

c. **Accepted** - intersections reviewed and updated. IR Reviewer emails PDF intersection(s), ready for DSD Site & Sub to schedule AW Valve Turn Walk Thru.

**Reviewed intersection(s) does not guarantee acceptance nor passing valve turn walk thru*