



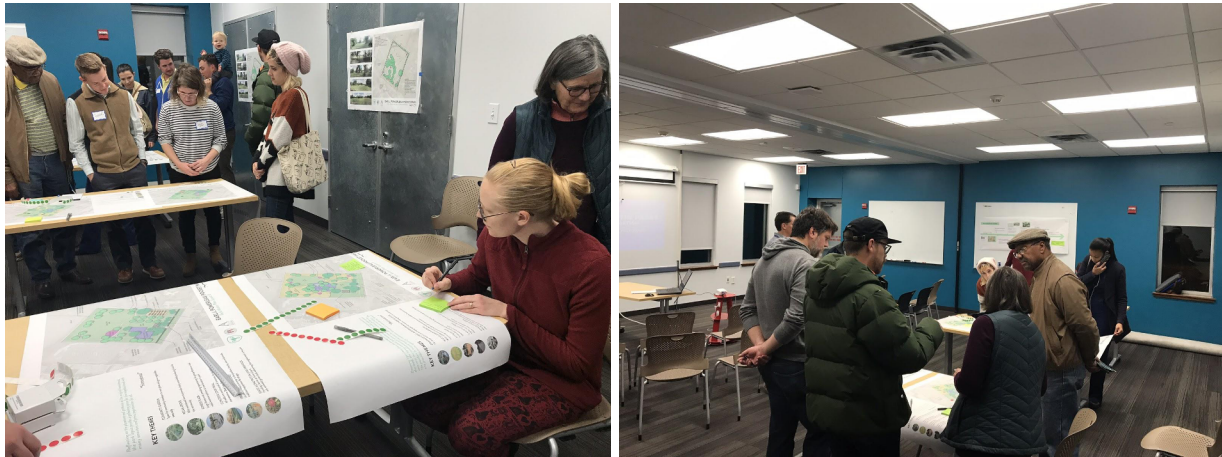
Summary Report of Public Meeting #2

January 16, 2019

Austin Parks Foundation, in coordination with the City of Austin Parks and Recreation Department, awarded park design services to Pomerleau Pocket Park for Park Master Planning. Throughout the year long master planning process, public input from the surrounding community was solicited to provide a long range vision and amenity prioritization for future development of the park.

The second public meeting included approximately twenty (20) attendees and was held from 6pm-8pm on Wednesday, January 16, 2019 at Windsor Park Branch Austin Public Library at 5833 Westminster Drive. The meeting featured a presentation along with Red Dot/Green Dot stations giving the participants an opportunity to vote between two designs generated from the first meeting's input and add comments and preferences to each.

Activity: Red Dot/Green Dot



"Red Dot/Green Dot" Stations

Meeting attendees were provided with two layout options for the future park. Red dots were available to layer on top of unwanted aspects of each plan, and green dots were offered to highlight favored amenities. Additionally, sticky notes were available to add comments to each layout. The most common requested amenities included:

- Long loop trail
- Open fence
- Pavilion
- Tables/benches
- Natural shaded playground
- Splash pad
- Night lighting
- Drinking fountains
- Pecan trees
- Wildflowers/native plants
- Bike parking
- Native grass



Earl J. Pomerleau Pocket Park

Park Master Planning

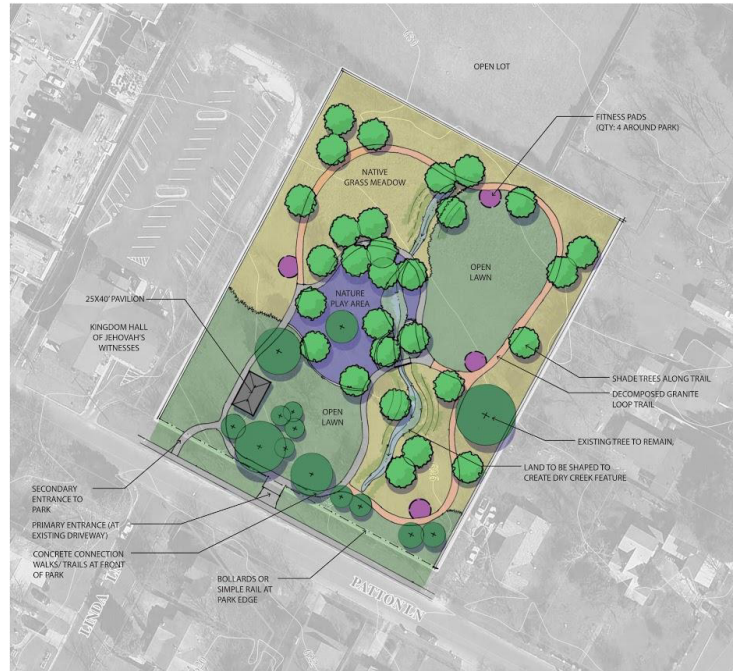
Master Plan Layout Options:

Drawing inspiration from the drainage patterns that were once present on the land, the layout combines both maintained turf for flexible open space uses and the establishment of a native meadow for a portion of the site. The pavilion is located toward the street for ease of access and safety. The site provides many options for exploration through it's meandering layout.

KEY THEMES

"Restoration"

- 
DRAINAGE/ CREEK RESTORATION AS PARK FEATURE
 Re-shape land to create topography of meadow rolling down to creek bed
- 
NATIVE GRASS MEADOW
 With wildflowers to provide seasonal interest and wildlife habitat while improving overall site health and eco system
- 
FITNESS PADS
 Individual equipment clustered along loop trail to spread out fitness opportunities in park
- 
LARGE LOOP TRAIL
 Walks are made of decomposed granite and concrete. Outer loop distance = 1/5 mile
- 
SHADED PLAY AREA
 Along dry creek to promote exploration of site by incorporating natural play elements with traditional play structures



EARL J. POMERLEAU POCKET PARK

Park Master Plan Layout A



Reflecting on the placement and patterns of the original homestead, the park layout provides a gathering space for the neighborhood with many amenities and fitness opportunities for all.

KEY THEMES

"Homestead"

- 
COMMUNITY GARDEN
 Space for community members to rent plots and grow vegetables seasonally
- 
PECAN GROVE
 With maintained lawn to provide shady area while producing fruit for the community
- 
FITNESS PLAZA
 Large fitness area providing opportunity for group fitness or individual exercise options at one location in park
- 
CONCRETE LOOP TRAIL
 All walks are constructed of concrete for durability and ease of maintenance. Back loop distance = 1/8 mile
- 
TRADITIONAL PLAYGROUND
 Located in close proximity to the pavilion, the play area will provide traditional equipment for all ages
- 
FENCE ALONG PATTON LANE FRONTAGE
 Providing a barrier at front of park with renovated garden beds welcoming the neighborhood to the park



EARL J. POMERLEAU POCKET PARK

Park Master Plan Layout B





Red Dot/Green Dot Activity Results

Layout Plan A "Restoration"		
AMENITY	Red Dot	Green Dot
	Dislike	Like
25x40' Pavilion		3
Bollards/Rail at Park Edge	2	4
Dry Creek Feature		5
Granite Loop Trail		4
Four Fitness Pads	6	2
Native Grass Meadow		6
Open Lawn (Top Right)		2
Nature Play Area	1	10
Open Lawn (Bottom Left)		3

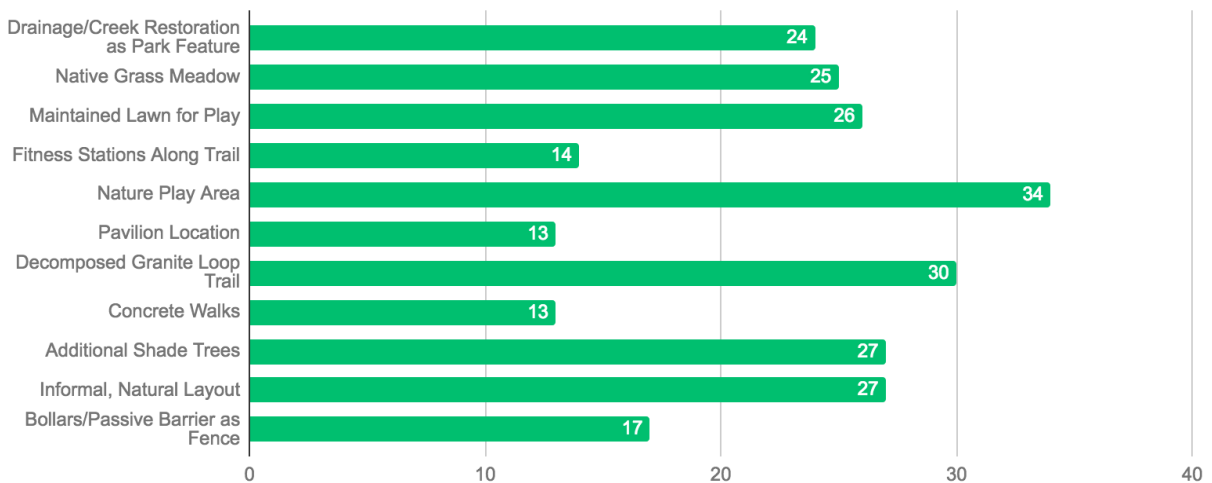
Layout Plan B "Homestead"		
AMENITY	Red Dot	Green Dot
	Dislike	Like
Secondary Entrance		2
Fence with Garden Beds		10
25x40' Pavilion	1	
Community Garden Plots	2	8
Pecan Groves	1	1
Concrete Loop Trail	1	
Large Open Lawn	2	3
Fitness Plaza	3	2
Traditional Playground		3

Online Survey Results

An online survey remained opened for one month after the public meeting to allow community members who were not able to attend in person the opportunity to provide feedback. Through the survey, we were able to collect information about which park layout and amenities the community prefers along with comments and concerns about development of the park.

Forty-five (45) participants provided responses for Layout A:

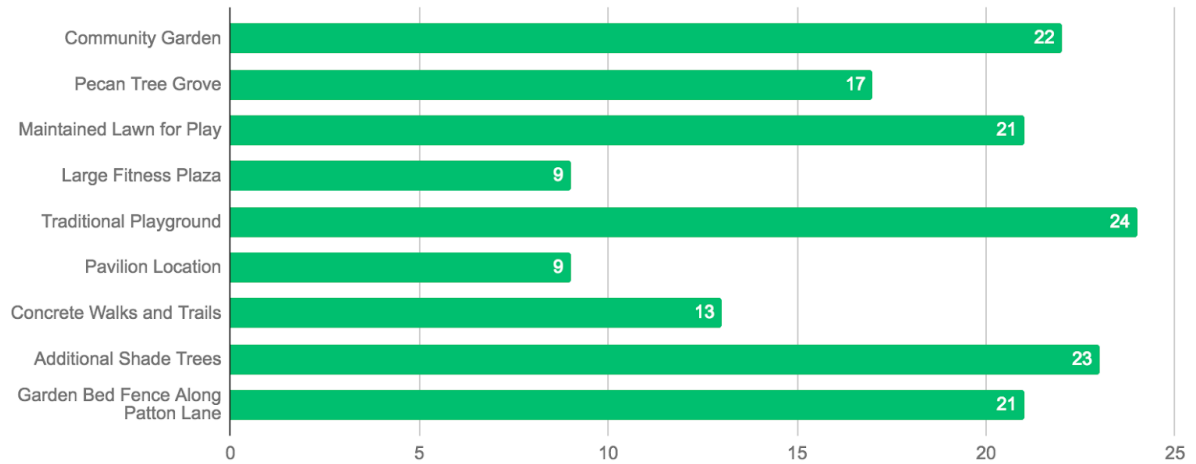
Which themes do you prefer from Layout Option A?





Thirty-Eight (38) participants provided responses for Layout B:

Which themes do you prefer from Layout Option B?



Some of the hopes and concerns expressed about the development of the park included:

1. Better lighting
2. Open fence
3. Natural play area
4. Picnic tables
5. Dispersed shade trees