

SCHOOL PROGRAMS OUTREACH: PRE-K TO 1ST GRADE

PROGRAM INFORMATION

MAX: 75 students max/program
PROGRAM FEES
AUSTIN RESIDENT: \$5.00/participant
NON-RESIDENT: 5.75/participant
MINIMUM: 15 students min/program
LENGTH: 1 hr in/outdoor

MENU OF PROGRAMS

Bat Buddies	Owls
Frogs and Toads	6 Legs, 8 Legs, Many Legs
Meet the Animals	Star Stories
	Program Registration Form



BAT BUDDIES

Did you know that bats use echolocation to navigate, that they are the only mammal that flies, and that 1.5 million bats live in Austin? Have fun exploring characteristics of bats that distinguish them from other mammals. Understand the importance of safety rules when encountering bats in the wild. Have fun creating a bat and choose a name for it. Play a game to learn about bat survival skills. Discuss where bats fit into the food chain.

TEKS K: 9a, b and 10a; 1: 9a, c, and 10a, d



FROGS AND TOADS

Meet a live frog, toad, and salamander in the classroom and compare their interesting characteristics. Discuss their unusual life cycles that make them amphibians. Discover the importance of the amphibian's sensitive skin and how they differ from reptiles. Play an amphibian survival game and learn about threats to their habitats. Listen to the calls of local frogs and toads; have you heard a Gulf Coast Toad in your backyard?

TEKS K: 9a, b and 10a; 1: 9a, c and 10a, d

[To Top](#) | [Outreach Planner](#) | [Outreach Registration](#)



MEET THE ANIMALS

Touch the soft fur of a live rabbit, the rough scales of a live snake and the feathers of different birds. Watch a turtle crawl across the floor. Observe live mice to compare mothers to their offspring. Explore the similarities and differences among mammals, reptiles and birds. Discover that different furs, feathers and scales may indicate animals' habitats. Discuss adaptations that help animals survive in their ecosystem.

TEKS K: 9a, b and 10a, b; 1: 9a, c and 10a, c, d

[To Top](#) | [Outreach Planner](#) | [Outreach Registration](#)



OWLS

Safely observe a live screech owl in the classroom, and then use binoculars to observe owls in the Birds of Prey sanctuary. Discuss owl characteristics and behavior and where they fit in the food chain. Determine what our resident owls have been eating by looking at owl pellets. Investigate different feathers to understand their purposes. Learn why owls are protected by laws.

TEKS K: 9a, b and 10a, b; 1: 9a, c and 10a, c, d

[To Top](#) | [Outreach Planner](#) | [Outreach Registration](#)

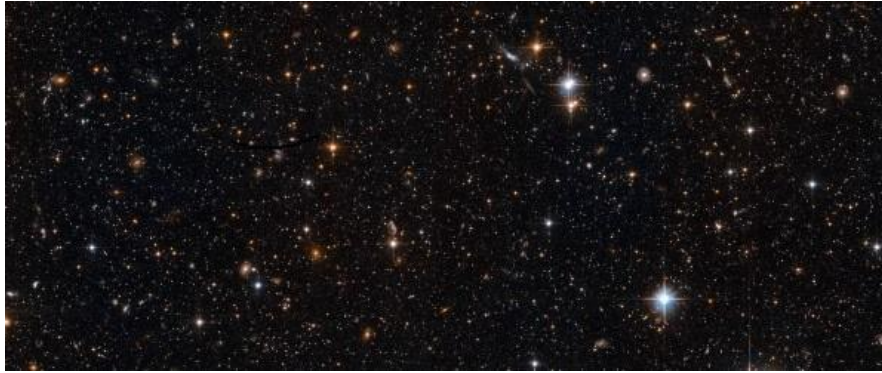


6 LEGS, 8 LEGS, MANY LEGS

Feel a meal worm crawl across your hand and use a magnifier to count its legs. Is it an insect? Look at the other stages of a meal worm's life cycle. Discuss the life cycles of other insects and their importance in the food web. Explore the different characteristics of insects, spiders and other arthropods. Sort and classify arthropods into different groups. Safely search for live critters in the meadow using nets and collecting jars.

TEKS K: 9a, b and 10a; 1: 9a, c and 10a, d

[To Top](#) | [Outreach Planner](#) | [Outreach Registration](#)



STAR STORIES

Explore star patterns in the night sky inside StarLab, our inflatable planetarium. Identify constellations that you might see at night in your own backyard. Rotate and revolve around a sun model to learn why we have day and night and why birthdays happen only every 365 days. Discover why the moon appears to shine and change shapes. Discuss the different characteristics of the Sun, the Earth and the moon. **This program is limited to two classes or 50 participants per program.**

TEKS K: 5a, b, c and 8b, c; 1: 5a and 6a and 8b, c

[To Top](#) | [Outreach Planner](#) | [Outreach Registration](#)

