

**Austin-Bergstrom International Airport
Aviation Activity Report
Calendar Year 2020 vs 2019**

Combined Terminals

	12/2020	12/2019	Percent Change	1/2020 - 12/2020	1/2019 - 12/2019	Percent Change
ABIA						
Total Passenger Activity						
Domestic Enplaned Revenue	243,367	676,495	-64.03%	2,947,085	7,715,929	-61.81%
Domestic Deplaned Revenue	234,254	657,508	-64.37%	2,953,047	7,692,923	-61.61%
International Enplaned Revenue	953	18,437	-94.83%	33,754	218,356	-84.54%
International Deplaned Revenue	765	17,424	-95.61%	36,489	224,491	-83.75%
Domestic Enplaned Non-Revenue	6,947	13,422	-48.24%	97,133	167,454	-41.99%
Domestic Deplaned Non-Revenue	6,960	12,462	-44.15%	92,423	159,944	-42.22%
International Enplaned Non-Revenue	10	159	-93.71%	509	1,710	-70.23%
International Deplaned Non-Revenue	6	141	-95.74%	440	1,793	-75.46%
Intl Enplaned Pre-Cleared Revenue	0	2,513	-100.00%	5,483	42,050	-86.96%
Intl Deplaned Pre-Cleared Revenue	0	1,972	-100.00%	4,626	40,911	-88.69%
Intl Enplaned Pre-Cleared Non-Revenue	0	42	-100.00%	108	528	-79.55%
Intl Deplaned Pre-Cleared Non-Revenue	0	48	-100.00%	100	548	-81.75%
South Terminal Domestic Enplaned Revenue	11,603	35,524	-67.34%	148,305	535,968	-72.33%
South Terminal Domestic Deplaned Revenue	11,001	34,731	-68.33%	151,580	537,338	-71.79%
South Terminal Domestic Enplaned Non-Revenue	54	91	-40.66%	744	1,716	-56.64%
South Terminal Domestic Deplaned Non-Revenue	42	84	-50.00%	753	2,070	-63.62%
ABIA Passenger Totals	515,962	1,471,053	-64.93	6,472,579	17,343,729	-62.68
<i>ABIA Enplaned Passenger Totals</i>	<i>262,934</i>	<i>746,683</i>	<i>-64.79</i>	<i>3,233,121</i>	<i>8,683,711</i>	<i>-62.77</i>
<i>ABIA Deplaned Passenger Totals</i>	<i>253,028</i>	<i>724,370</i>	<i>-65.07</i>	<i>3,239,458</i>	<i>8,660,018</i>	<i>-62.59</i>
<i>ABIA Domestic Passenger Totals</i>	<i>514,228</i>	<i>1,430,317</i>	<i>-64.05</i>	<i>6,391,070</i>	<i>16,813,342</i>	<i>-61.99</i>
<i>ABIA International Passenger Totals</i>	<i>1,734</i>	<i>40,736</i>	<i>-95.74</i>	<i>81,509</i>	<i>530,387</i>	<i>-84.63</i>

CURRENT PASSENGER RECORD = 1,643,016 RECORD SET = JULY 2019

Total Aircraft Operations

Air Carrier	5,957	11,936	-50.09%	78,922	142,150	-44.48%
Commuter & Air Taxi	1,414	1,343	5.29%	13,644	16,061	-15.05%
Military	402	297	35.35%	5,070	7,918	-35.97%
General Aviation						
Itinerant	3,003	3,382	-11.21%	33,438	42,755	-21.79%
Local	0	0	0.00%	268	842	-68.17%
Total G.A.	3,003	3,382	-11.21	33,706	43,597	-22.69
Total Operations	10,776	16,958	-36.45	131,342	209,726	-37.37

**Austin-Bergstrom International Airport
Aviation Activity Report
Calendar Year 2020 vs 2019**

By Terminal

	12/2020	12/2019	Percent Change	1/2020 - 12/2020	1/2019 - 12/2019	Percent Change
<u>Barbara Jordan Terminal (BJT)</u>						
Passenger Activity						
Domestic Enplaned Revenue	243,367	676,495	-64.03%	2,947,085	7,715,929	-61.81%
Domestic Deplaned Revenue	234,254	657,508	-94.83%	2,953,047	7,692,923	-84.54%
International Enplaned Revenue	953	18,437	-95.61%	33,754	218,356	-83.75%
International Deplaned Revenue	765	17,424	-95.61%	36,489	224,491	-83.75%
Domestic Enplaned Non-Revenue	6,947	13,422	-48.24%	97,133	167,454	-41.99%
Domestic Deplaned Non-Revenue	6,960	12,462	-44.15%	92,423	159,944	-42.22%
International Enplaned Non-Revenue	10	159	-93.71%	509	1,710	-70.23%
International Deplaned Non-Revenue	6	141	-95.74%	440	1,793	-75.46%
Intl Enplaned Pre-Cleared Revenue	0	2,513	-100.00%	5,483	42,050	-86.96%
Intl Deplaned Pre-Cleared Revenue	0	1,972	-100.00%	4,626	40,911	-88.69%
Intl Enplaned Pre-Cleared Non-Revenue	0	42	-100.00%	108	528	-79.55%
Intl Deplaned Pre-Cleared Non-Revenue	0	48	-100.00%	100	548	-81.75%
Barbara Jordan Terminal Passenger Totals	493,262	1,400,623	-64.78	6,171,197	16,266,637	-62.06
<i>BJT Enplaned Passenger Totals</i>	<i>251,277</i>	<i>711,068</i>	<i>-64.66</i>	<i>3,084,072</i>	<i>8,146,027</i>	<i>-62.14</i>
<i>BJT Deplaned Passenger Totals</i>	<i>241,985</i>	<i>689,555</i>	<i>-64.91</i>	<i>3,087,125</i>	<i>8,120,610</i>	<i>-61.98</i>
<i>BJT Domestic Passenger Totals</i>	<i>491,528</i>	<i>1,359,887</i>	<i>-63.86</i>	<i>6,089,688</i>	<i>15,736,250</i>	<i>-61.30</i>
<i>BJT International Passenger Totals</i>	<i>1,734</i>	<i>40,736</i>	<i>-95.74</i>	<i>81,509</i>	<i>530,387</i>	<i>-84.63</i>
<u>South Terminal (ST)</u>						
Passenger Activity						
South Terminal Domestic Enplaned Revenue	11,603	35,524	-67.34%	148,305	535,968	-72.33%
South Terminal Domestic Deplaned Revenue	11,001	34,731	-68.33%	151,580	537,338	-71.79%
South Terminal Domestic Enplaned Non-Revenue	54	91	-40.66%	744	1,716	-56.64%
South Terminal Domestic Deplaned Non-Revenue	42	84	-50.00%	753	2,070	-63.62%
South Terminal Passenger Totals	22,700	70,430	-67.77	301,382	1,077,092	-72.02
<i>ST Enplaned Passenger Totals</i>	<i>11,657</i>	<i>35,615</i>	<i>-67.27</i>	<i>149,049</i>	<i>537,684</i>	<i>-72.28</i>
<i>ST Deplaned Passenger Totals</i>	<i>11,043</i>	<i>34,815</i>	<i>-68.28</i>	<i>152,333</i>	<i>539,408</i>	<i>-71.76</i>

**Austin-Bergstrom International Airport
Aviation Activity Report
Calendar Year 2020 vs 2019**

	12/2020	12/2019	Percent Change	1/2020 - 12/2020	1/2019 - 12/2019	Percent Change
<u>Total Cargo Activity</u>						
Mail						
Domestic Enplaned Mail	169,096	247,703	-31.73%	2,133,341	2,354,286	-9.38%
Domestic Deplaned Mail	418,930	634,007	-33.92%	5,337,079	8,044,724	-33.66%
International Enplaned Mail	0	0	0.00%	0	0	0.00%
International Deplaned Mail	0	0	0.00%	0	110,830	-100.00%
South Terminal-Domestic Enplaned Mail	0	0	0.00%	0	0	0.00%
South Terminal-Domestic Deplaned Mail	0	0	0.00%	0	0	0.00%
Mail Totals	588,026	881,710	-33.31	7,470,420	10,509,840	-28.92
Cargo						
Domestic Enplaned Cargo	10,197,455	5,056,258	101.68%	83,681,766	57,965,500	44.36%
Domestic Deplaned Cargo	14,274,316	7,805,153	82.88%	117,497,357	82,485,526	42.45%
International Enplaned Cargo	29,697	206,508	-85.62%	1,158,725	6,064,392	-80.89%
International Deplaned Cargo	11,220	126,092	-91.10%	557,974	3,024,848	-81.55%
South Terminal-Domestic Enplaned Cargo	0	0	0.00%	0	0	0.00%
South Terminal-Domestic Deplaned Cargo	0	0	0.00%	0	0	0.00%
Cargo Totals	24,512,688	13,194,011	85.79	202,895,822	149,540,266	35.68
Belly Freight						
Domestic Enplaned Belly Freight	161,091	315,813	-48.99%	2,586,425	3,781,224	-31.60%
Domestic Deplaned Belly Freight	310,949	503,681	-38.26%	4,080,325	6,124,397	-33.38%
International Enplaned Belly Freight	0	326,009	-100.00%	1,035,039	4,177,197	-75.22%
International Deplaned Belly Freight	0	969,520	-100.00%	2,056,175	8,153,757	-74.78%
South Terminal-Domestic Enplaned Belly Frght	0	0	0.00%	0	0	0.00%
South Terminal-Domestic Deplaned Belly Frght	0	0	0.00%	0	0	0.00%
Belly Freight Totals	472,040	2,115,023	-77.68	9,757,964	22,236,575	-56.12
Cargo Totals (Mail, Cargo, Belly Freight)	25,572,754	16,190,744	57.95	220,124,206	182,286,681	20.76
<i>Enplaned Cargo Totals</i>	<i>10,557,339</i>	<i>6,152,291</i>	<i>71.60</i>	<i>90,595,296</i>	<i>74,342,599</i>	<i>21.86</i>
<i>Deplaned Cargo Totals</i>	<i>15,015,415</i>	<i>10,038,453</i>	<i>49.58</i>	<i>129,528,910</i>	<i>107,944,082</i>	<i>20.00</i>
<i>Domestic Cargo Totals</i>	<i>25,531,837</i>	<i>14,562,615</i>	<i>75.32</i>	<i>215,316,293</i>	<i>160,755,657</i>	<i>33.94</i>
<i>International Cargo Totals</i>	<i>40,917</i>	<i>1,628,129</i>	<i>-97.49</i>	<i>4,807,913</i>	<i>21,531,024</i>	<i>-77.67</i>

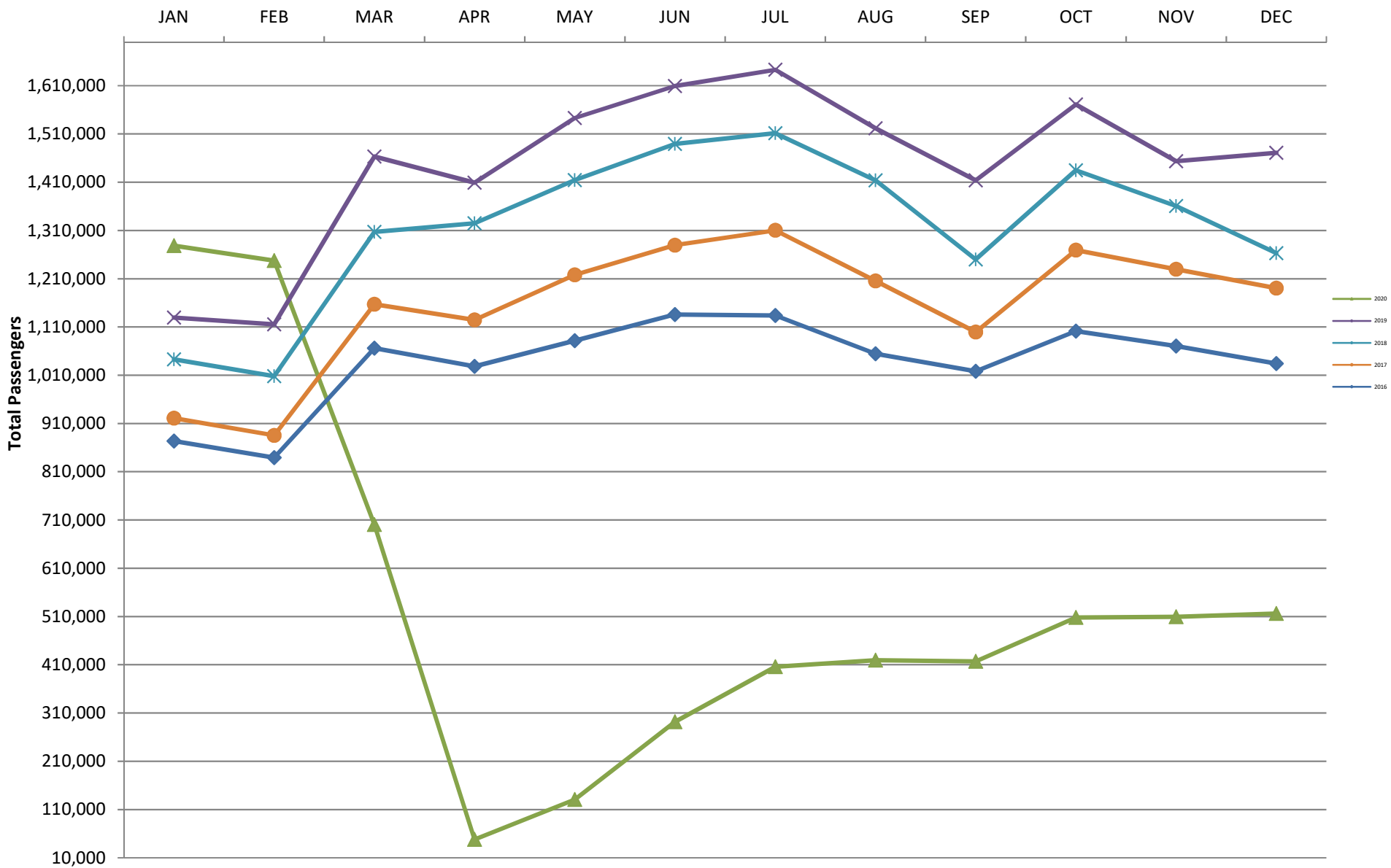
CURRENT CARGO RECORD = 40,215,518

RECORD SET = MARCH 2001

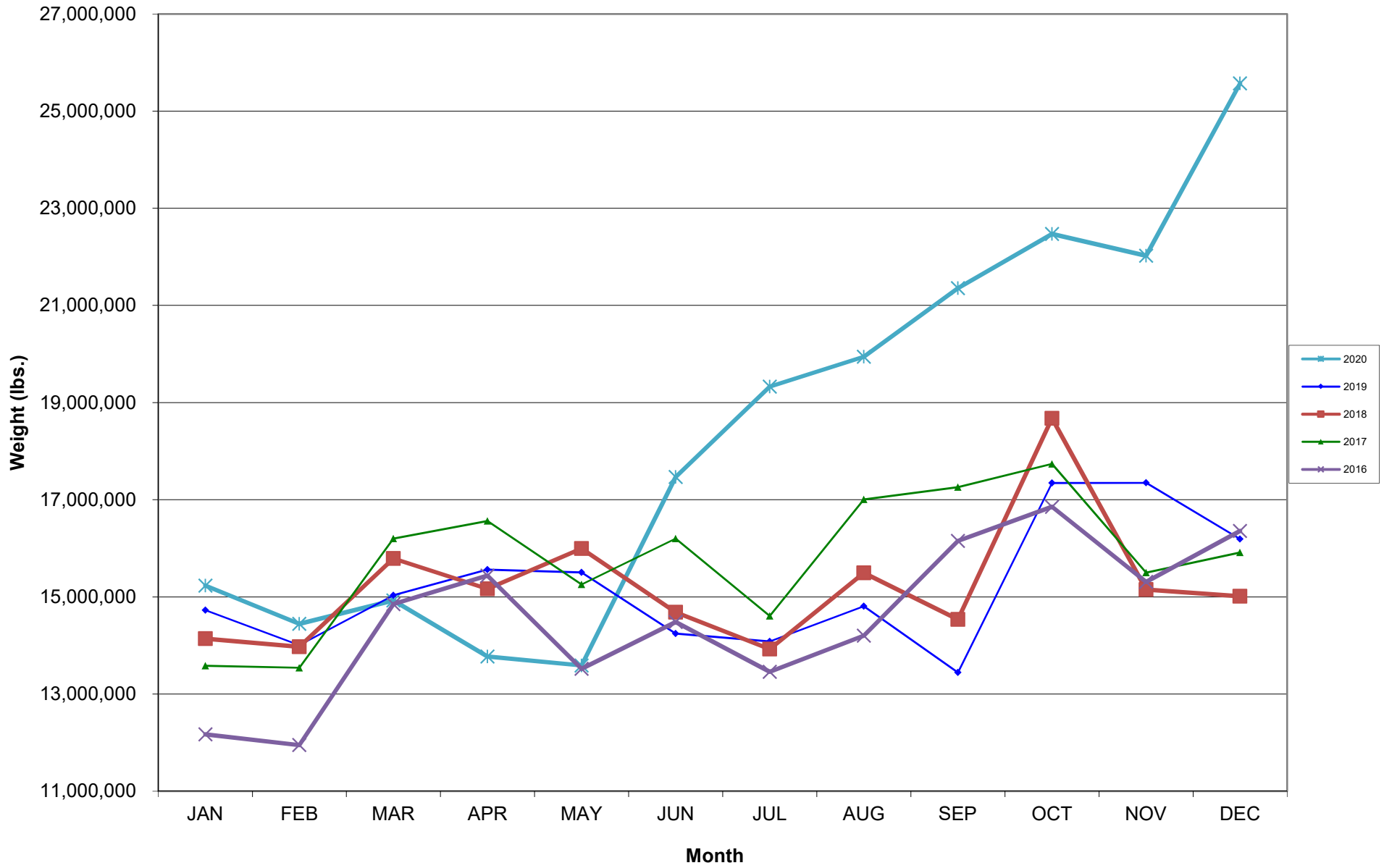
AUS – Airline Codes
December 2020

<u>Code</u>	<u>Carrier</u>
AS	Alaska Airlines, Inc.
G4	Allegiant Air, LLC
AA	American Airlines, Inc.
DL	Delta Air Lines
F9	Frontier Airlines, Inc.
B6	JetBlue Airways Corp.
WN	Southwest Airlines
NK	Spirit Airlines, Inc.
SY	Sun Country Airlines/MN Airlines LLC
UA	United Airlines, Inc.

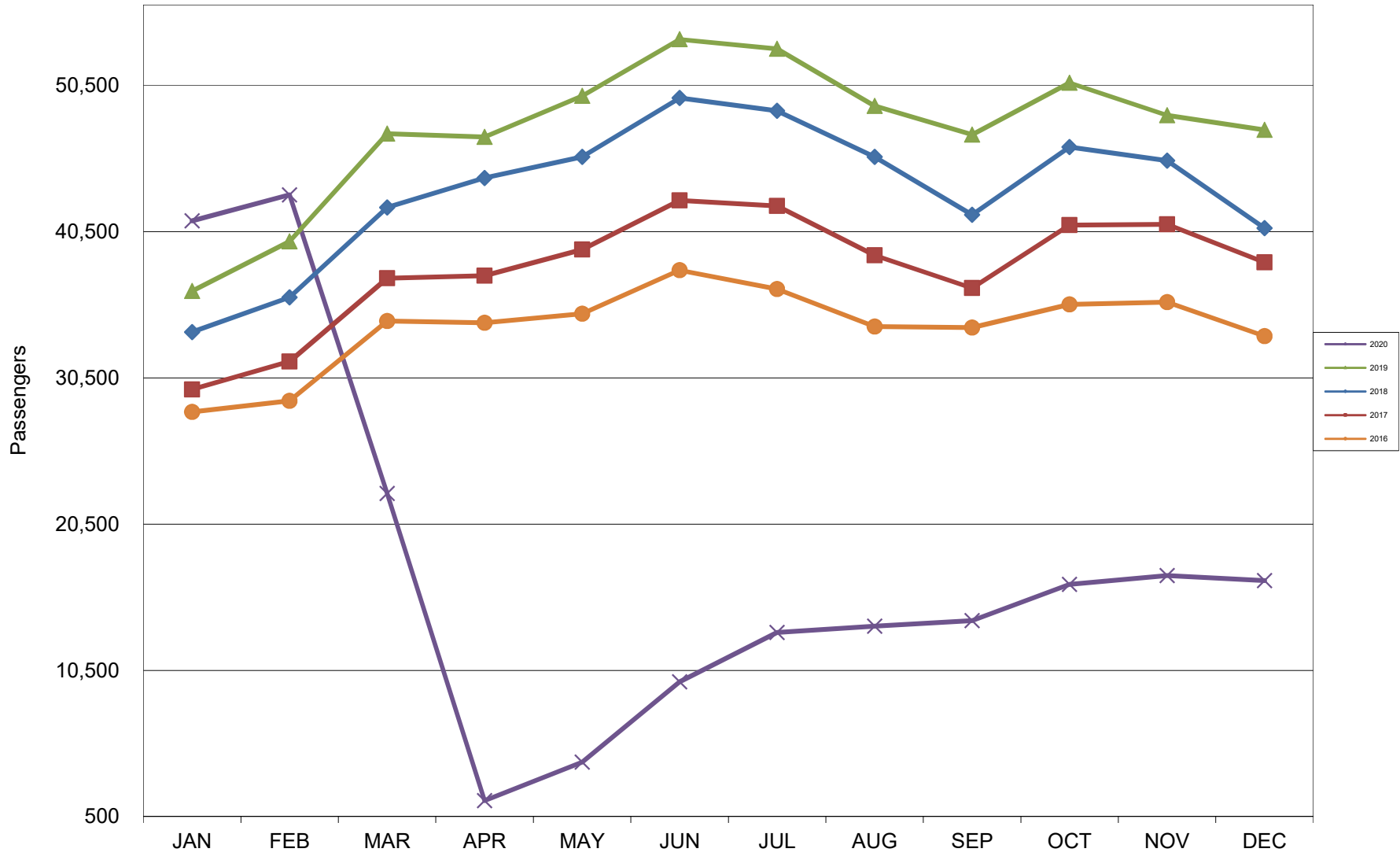
AUSTIN PASSENGER TRAFFIC 5 Year Trend



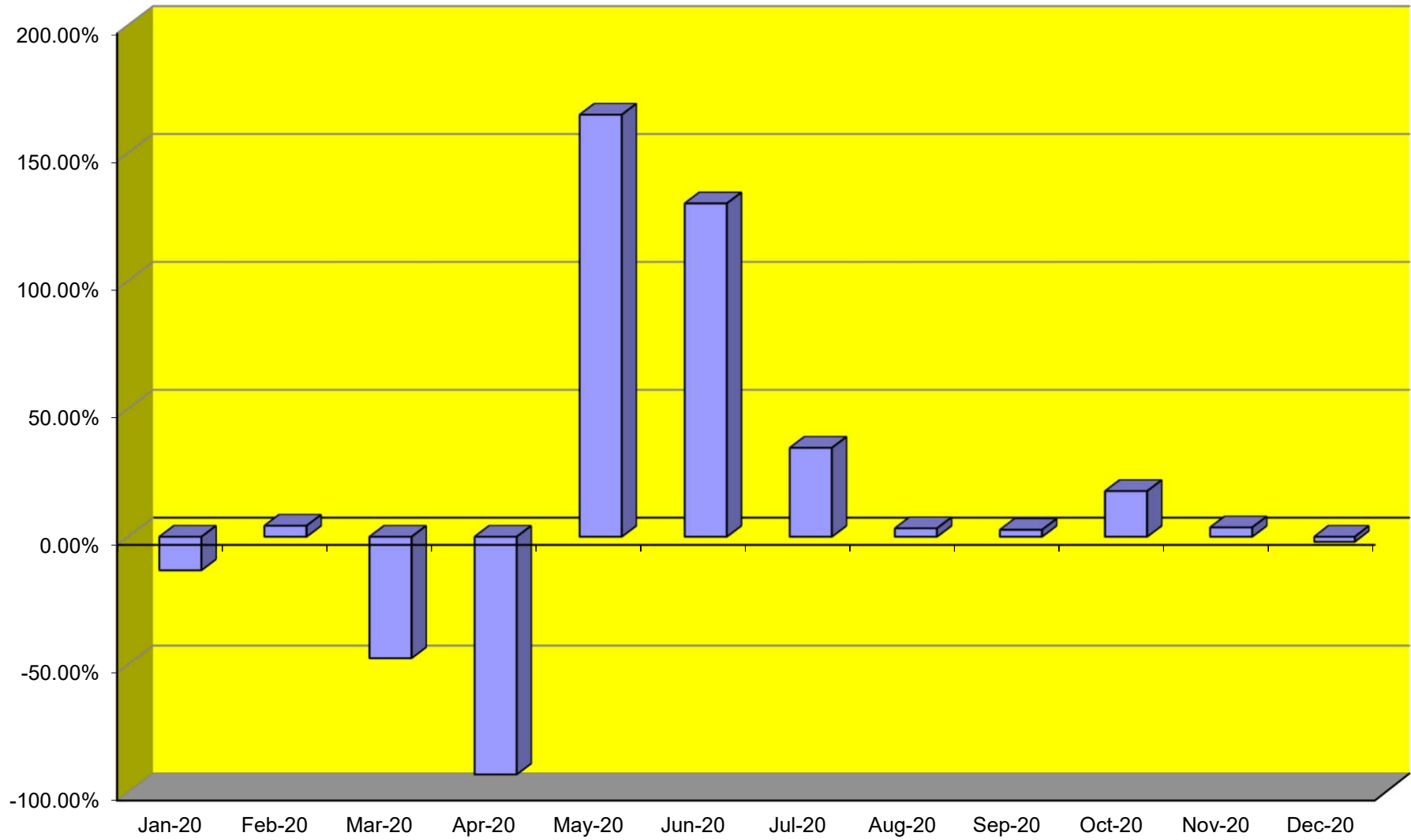
TOTAL CARGO POUNDAGE - AUSTIN, TEXAS



Average Daily Passengers



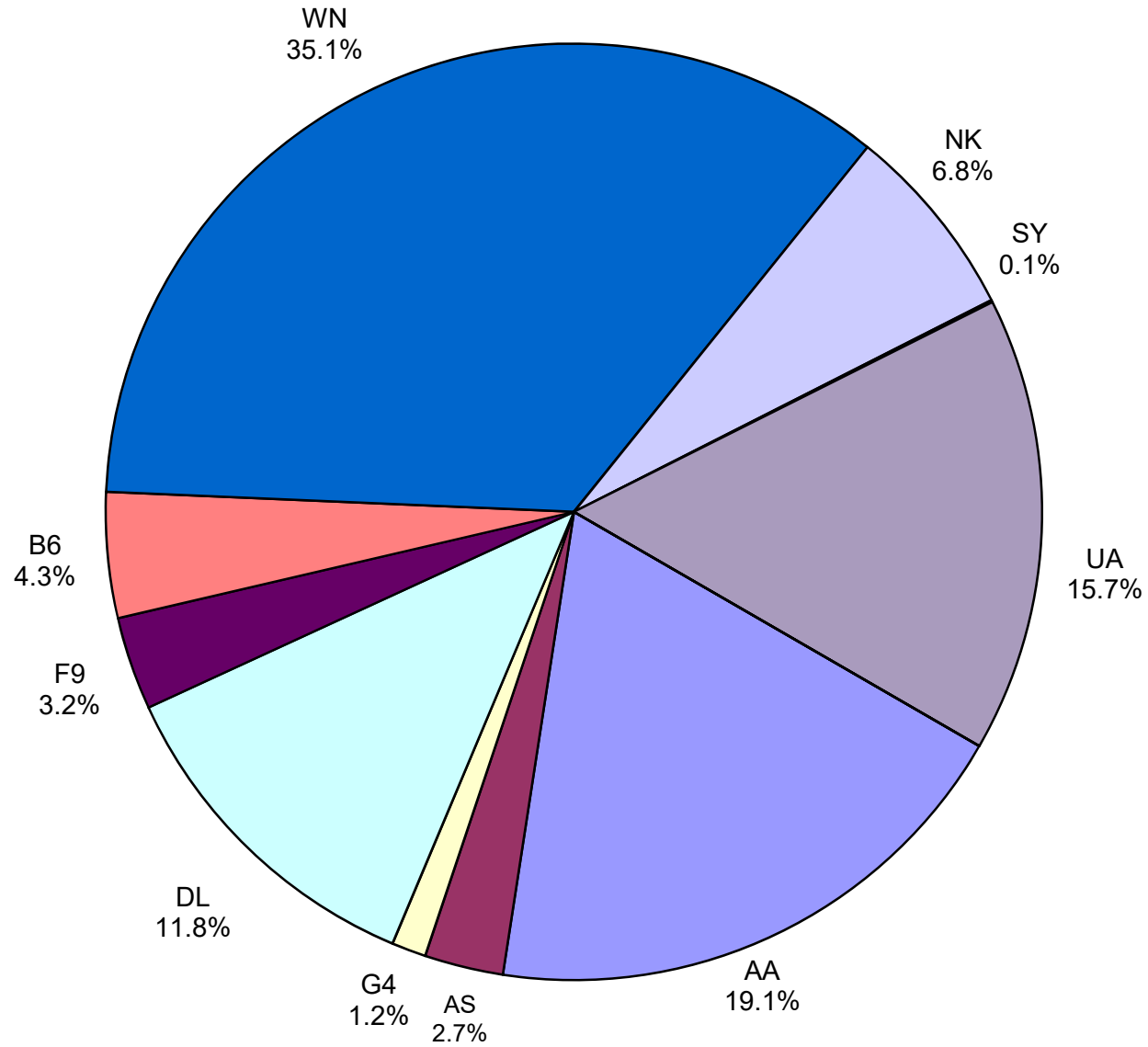
Monthly % Change in Average Daily Passengers



HISTORY OF INTERNATIONAL AIR CARGO



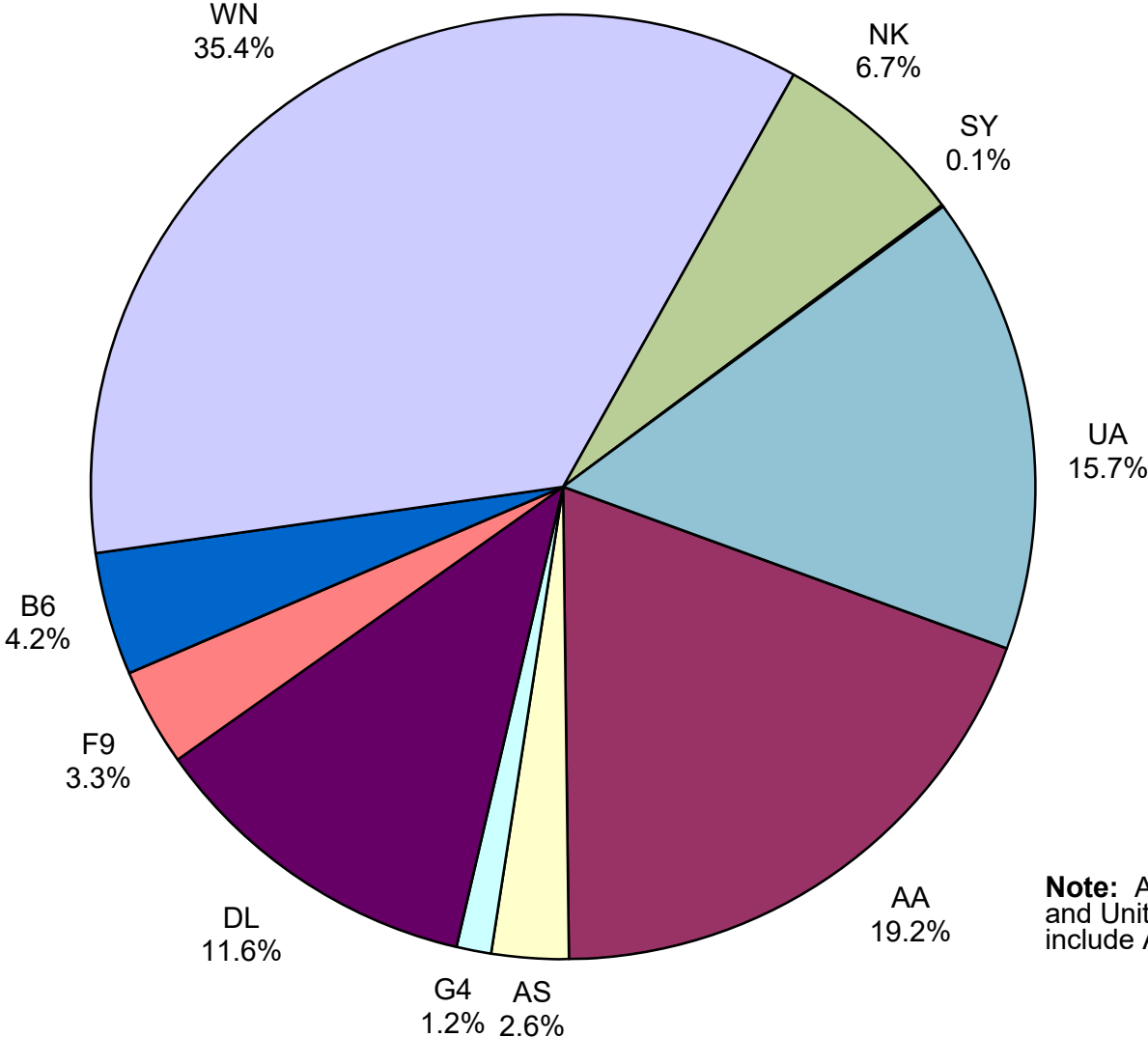
Total Passengers December 2020



Other:

Note: American, Delta and United Airlines percentages include Affiliates.

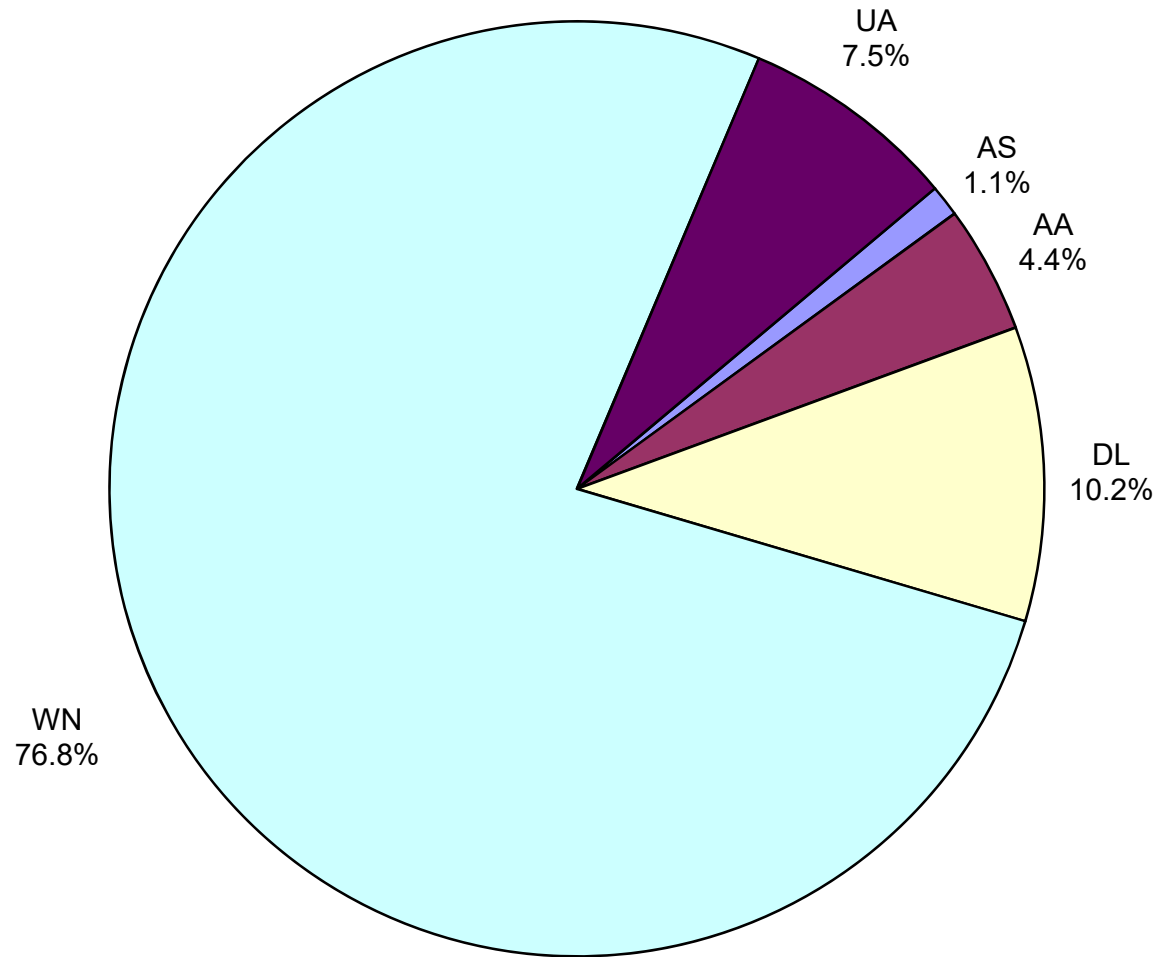
**All Passenger Carriers
Enplaned Revenue Passengers
December 2020**



Other:

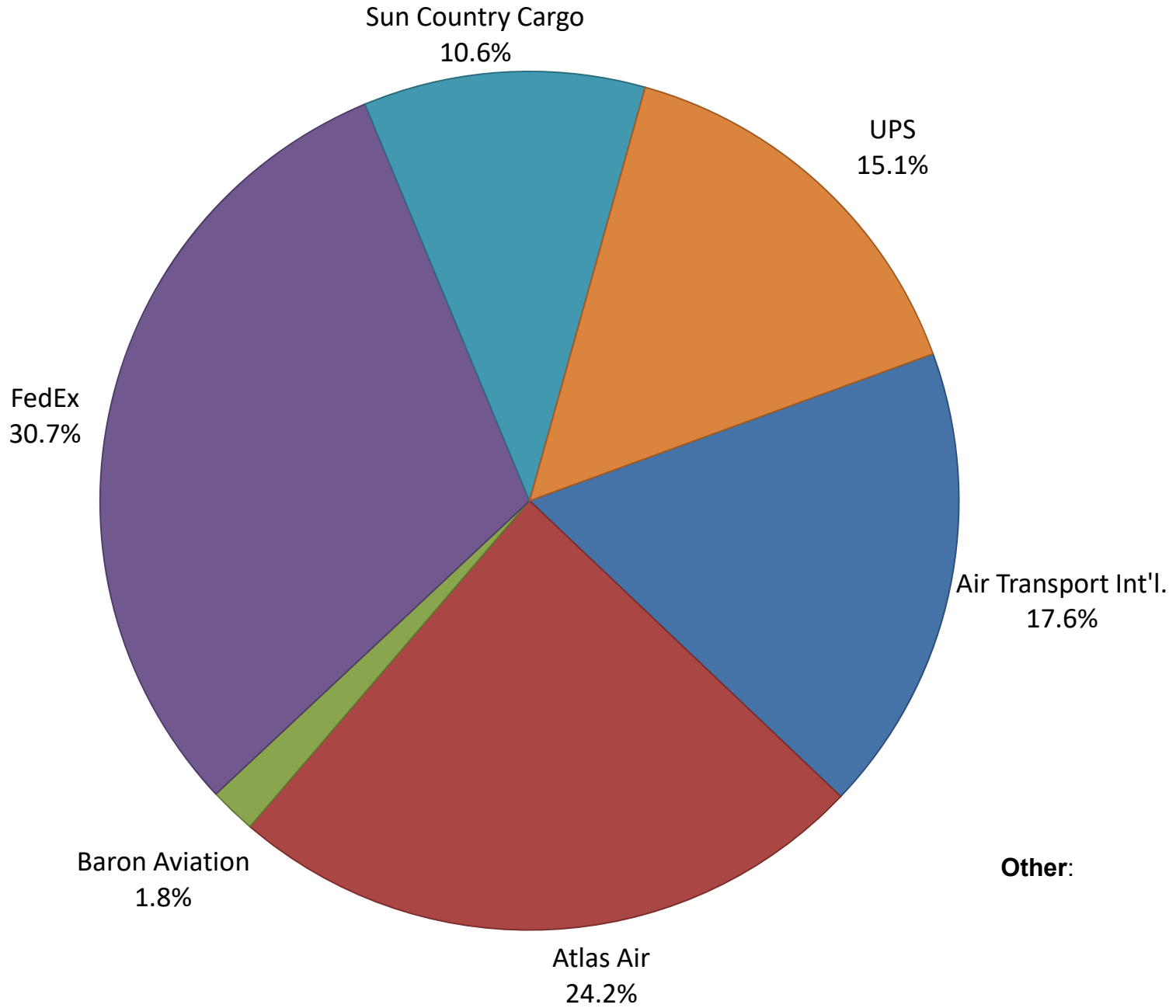
Note: American/US Airways, Delta and United Airlines percentages include Affiliates.

**AUS Belly Freight Market Shares
December 2020**

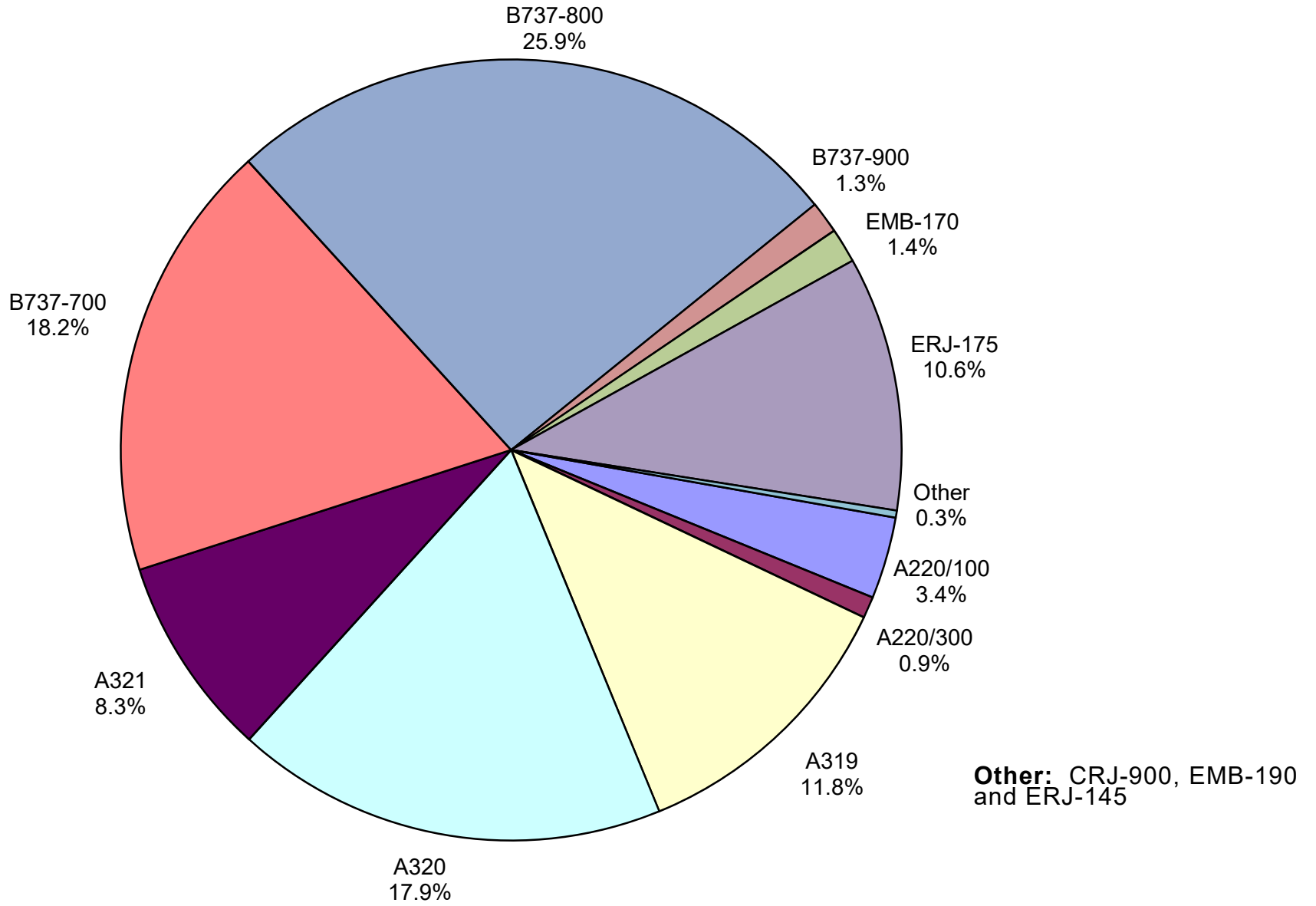


Other =

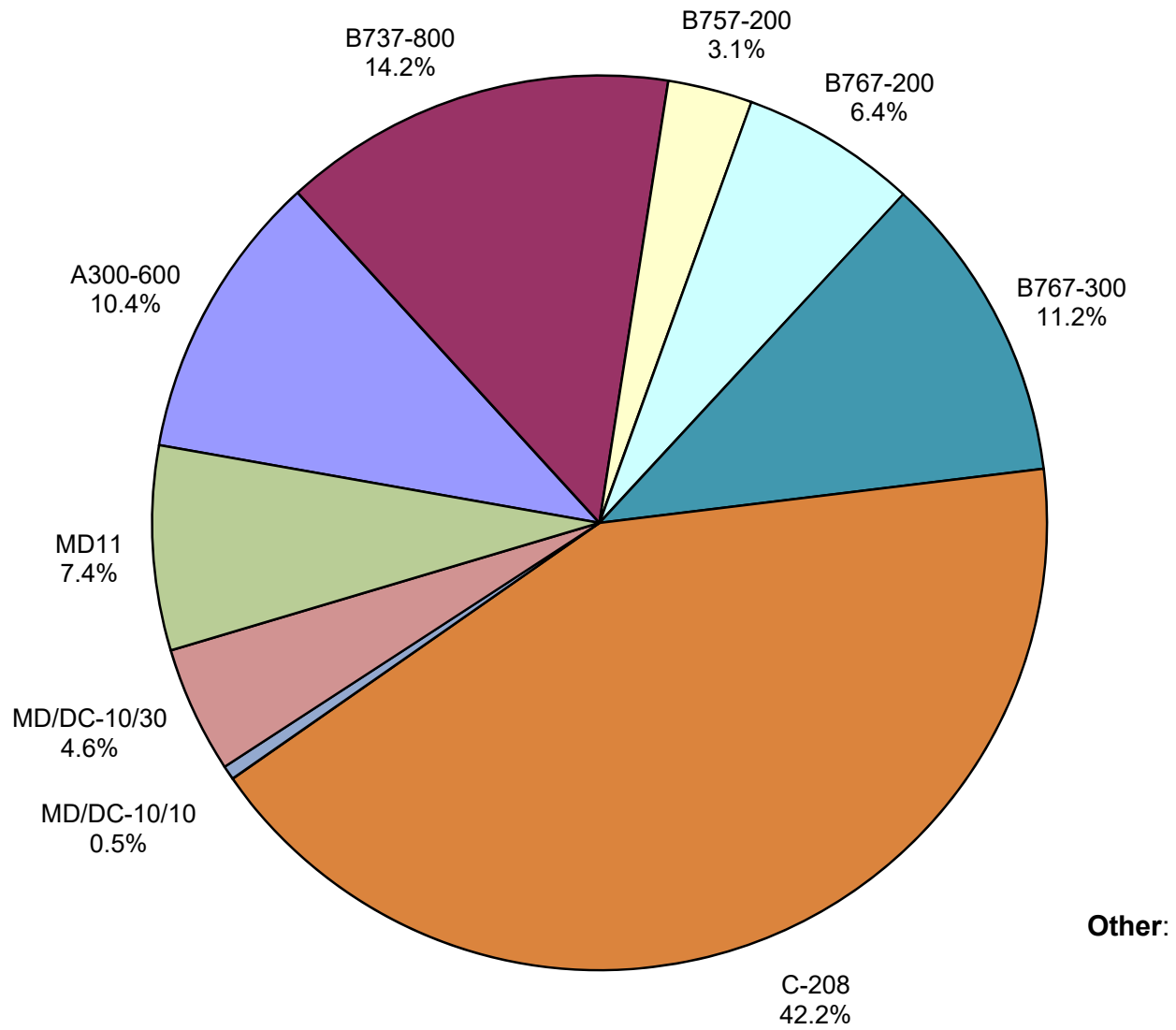
Air Cargo Market Share December 2020



**AUS Scheduled Passenger Aircraft Fleet Mix
December 2020**



**AUS Scheduled Cargo Aircraft Fleet Mix
December 2020**



Austin-Bergstrom International Airport

Pax Detail Report - December, 2020

Company	Period				YTD				2020 Share	2019 Share	Share Diff
	12/2020	12/2019	Difference	Change	YTD 2020	YTD 2019	Difference	Change			
Aeroenlaces Nacionales, SA DE CV	0	0	0	0.0	197	164	33	20.1	0.0	0.0	0.0
Aerovias de Mexico S.A. de C.V. (DIP)	0	0	0	0.0	378	0	378	0.0	0.0	0.0	0.0
Aerovias de Mexico S.A. de C.V. Pre Bankruptcy	0	4,877	-4,877	-100.0	9,915	48,063	-38,148	-79.4	0.2	0.3	-0.1
Air Canada	0	4,575	-4,575	-100.0	10,317	70,672	-60,355	-85.4	0.2	0.4	-0.2
Air New Zealand Limited	0	0	0	0.0	0	302	-302	-100.0	0.0	0.0	0.0
Alaska Airlines INC	14,037	61,640	-47,603	-77.2	257,147	641,880	-384,733	-59.9	4.0	3.7	0.3
Allegiant Air LLC	6,118	15,717	-9,599	-61.1	81,322	186,268	-104,946	-56.3	1.3	1.1	0.2
American Airlines INC	98,507	264,779	-166,272	-62.8	1,336,450	3,092,367	-1,755,917	-56.8	20.6	17.8	2.8
British Airways PLC	0	14,691	-14,691	-100.0	29,217	187,953	-158,736	-84.5	0.5	1.1	-0.6
Concesionaria Vuela Compañía de Aviación, S.A.P.I.	0	0	0	0.0	0	434	-434	-100.0	0.0	0.0	0.0
Delta Air Lines	60,908	200,023	-139,115	-69.5	807,055	2,362,284	-1,555,229	-65.8	12.5	13.6	-1.1
Deutsche Lufthansa AG	0	9,132	-9,132	-100.0	15,883	67,307	-51,424	-76.4	0.2	0.4	-0.2
Frontier Airlines INC	16,582	54,713	-38,131	-69.7	220,060	887,606	-667,546	-75.2	3.4	5.1	-1.7
JetBlue Airways Corporation	22,366	52,216	-29,850	-57.2	212,802	574,719	-361,917	-63.0	3.3	3.3	0.0
Miami Air International INC Pre Bankruptcy	0	0	0	0.0	121	2,396	-2,275	-94.9	0.0	0.0	0.0
Norwegian Air UK LTD	0	0	0	0.0	3,474	62,435	-58,961	-94.4	0.1	0.4	-0.3
Scandinavian Airlines	0	0	0	0.0	0	423	-423	-100.0	0.0	0.0	0.0
Southwest Airlines	181,112	499,235	-318,123	-63.7	2,174,559	5,844,301	-3,669,742	-62.8	33.6	33.7	-0.1
Spirit Airlines Inc	34,798	79,592	-44,794	-56.3	435,743	772,373	-336,630	-43.6	6.7	4.5	2.2
Sun Country Airlines/MN Airlines LLC	381	2,138	-1,757	-82.2	11,935	39,271	-27,336	-69.6	0.2	0.2	0.0
Swift Air LLC	0	0	0	0.0	1,202	2,729	-1,527	-56.0	0.0	0.0	0.0
United Airlines INC	81,153	207,725	-126,572	-60.9	864,802	2,481,449	-1,616,647	-65.1	13.4	14.3	-0.9
Vacation Express	0	0	0	0.0	0	1,750	-1,750	-100.0	0.0	0.0	0.0
VIA Airlines, INC	0	0	0	0.0	0	3,218	-3,218	-100.0	0.0	0.0	0.0
WestJet	0	0	0	0.0	0	13,365	-13,365	-100.0	0.0	0.1	-0.1
Report Totals	515,962	1,471,053	-955,091	-64.9%	6,472,579	17,343,729	-10,871,150	-62.7%	100.2%	100.0%	

Statistics Included in Report

Domestic Passengers: Enplaned Revenue, Deplaned Revenue, Enplaned Non-Revenue, Deplaned Non-Revenue

International Passengers: Enplaned Revenue, Deplaned Revenue, Enplaned Non-Revenue, Deplaned Non-Revenue

International Pre-Cleared Passengers: Enplaned Revenue, Deplaned Revenue, Enplaned Non-Revenue, Deplaned Non-Revenue

South Terminal Domestic Passengers: Enplaned Revenue, Deplaned Revenue, Enplaned Non-Revenue, Deplaned Non-Revenue

Austin-Bergstrom International Airport

Summary Landings Report

Landing Type: Total

Month	2020		2019		2018		% Change 2020- 2019		% Change 2019- 2018	
	Count	Weight	Count	Weight	Count	Weight	Count	Weight	Count	Weight
January	5,762	812,175,948	5,348	733,746,679	5,086	688,923,110	7.74%	10.69%	5.15%	6.51%
February	5,382	764,833,023	5,040	692,708,930	4,706	637,500,756	6.79%	10.41%	7.10%	8.66%
March	5,278	742,099,772	5,964	825,483,911	5,643	760,648,260	-11.50%	-10.10%	5.69%	8.52%
April	1,884	264,508,162	5,899	815,621,798	5,797	793,367,736	-68.06%	-67.57%	1.76%	2.81%
May	1,608	223,266,578	6,294	881,747,150	6,117	831,431,763	-74.45%	-74.68%	2.89%	6.05%
June	2,119	293,669,395	6,322	890,410,020	6,211	852,438,818	-66.48%	-67.02%	1.79%	4.45%
July	3,401	458,639,882	6,551	915,103,306	6,346	869,502,671	-48.08%	-49.88%	3.23%	5.24%
August	3,390	473,872,571	6,447	906,499,773	6,245	861,046,997	-47.42%	-47.73%	3.23%	5.28%
September	2,791	378,925,681	6,020	848,899,951	5,737	790,731,351	-53.64%	-55.36%	4.93%	7.36%
October	2,972	409,225,230	6,459	916,700,076	6,078	846,310,860	-53.99%	-55.36%	6.27%	8.32%
November	3,157	438,563,290	5,924	836,527,780	5,684	780,994,101	-46.71%	-47.57%	4.22%	7.11%
December	3,126	431,926,302	6,078	848,973,148	5,600	761,317,385	-48.57%	-49.12%	8.54%	11.51%
Totals For Selected Period	40,870	5,691,705,834	72,346	10,112,422,522	69,250	9,474,213,808	-43.51%	-43.72%	4.47%	6.74%
Yearly Totals	40,870	5,691,705,834	72,346	10,112,422,522	69,250	9,474,213,808	-43.51%	-43.72%	4.47%	6.74%